

Product datasheet for **TA808177**

ALAS1 Mouse Monoclonal Antibody [Clone ID: OTI1C5]

Product data:

| | |
|-------------------------|--|
| Product Type: | Primary Antibodies |
| Clone Name: | OTI1C5 |
| Applications: | WB |
| Recommended Dilution: | WB 1:2000 |
| Reactivity: | Human, Mouse, Rat |
| Host: | Mouse |
| Isotype: | IgG1 |
| Clonality: | Monoclonal |
| Immunogen: | Human recombinant protein fragment corresponding to amino acids 57-308 of human ALAS1(NP_000679) produced in E.coli. |
| Formulation: | PBS (pH 7.3) containing 1% BSA, 50% glycerol and 0.02% sodium azide. |
| Concentration: | 1 mg/ml |
| Purification: | Purified from mouse ascites fluids or tissue culture supernatant by affinity chromatography (protein A/G) |
| Conjugation: | Unconjugated |
| Storage: | Store at -20°C as received. |
| Stability: | Stable for 12 months from date of receipt. |
| Predicted Protein Size: | 70.4 kDa |
| Gene Name: | 5'-aminolevulinate synthase 1 |
| Database Link: | NP_000679 Entrez Gene 11655 Mouse Entrez Gene 65155 Rat Entrez Gene 211 Human P13196 |



[View online »](#)

Background:

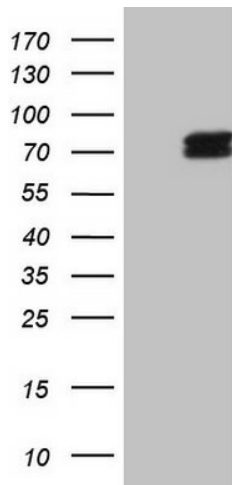
This gene encodes the mitochondrial enzyme which catalyzes the rate-limiting step in heme (iron-protoporphyrin) biosynthesis. The enzyme encoded by this gene is the housekeeping enzyme; a separate gene encodes a form of the enzyme that is specific for erythroid tissue. The level of the mature encoded protein is regulated by heme: high levels of heme down-regulate the mature enzyme in mitochondria while low heme levels up-regulate. A pseudogene of this gene is located on chromosome 12. Multiple alternatively spliced variants, encoding the same protein, have been identified. [provided by RefSeq, Dec 2011]

Synonyms:

ALAS; ALAS-H; ALAS3; ALASH; MIG4

Protein Pathways:

Glycine, serine and threonine metabolism, Metabolic pathways, Porphyrin and chlorophyll metabolism

Product images:

HEK293T cells were transfected with the pCMV6-ENTRY control (Cat# [PS100001], Left lane) or pCMV6-ENTRY ALAS1 (Cat# [RC219938], Right lane) cDNA for 48 hrs and lysed. Equivalent amounts of cell lysates (5 ug per lane) were separated by SDS-PAGE and immunoblotted with anti-ALAS1 (Cat# TA808177)(1:2000). Positive lysates [LY400229] (100ug) and [LC400229] (20ug) can be purchased separately from OriGene.