

## Product datasheet for **TA808167AM**

### ZIC3 Mouse Monoclonal Antibody (Biotin conjugated) [Clone ID: OTI6F7]

#### Product data:

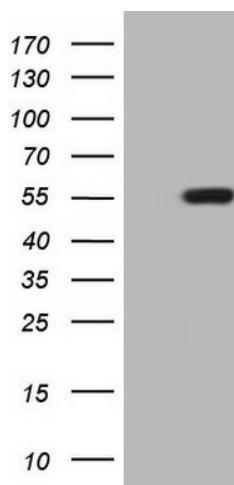
Product Type:	Primary Antibodies
Clone Name:	OTI6F7
Applications:	WB
Recommended Dilution:	WB 1:500
Reactivity:	Human, Mouse
Host:	Mouse
Isotype:	IgG2a
Clonality:	Monoclonal
Immunogen:	Human recombinant protein fragment corresponding to amino acids 242-467 of human ZIC3(NP_003404) produced in E.coli.
Formulation:	PBS (pH 7.3) containing 1% BSA, 50% glycerol and 0.02% sodium azide.
Concentration:	0.5 mg/ml
Purification:	Purified from mouse ascites fluids or tissue culture supernatant by affinity chromatography (protein A/G)
Conjugation:	Biotin
Storage:	Store at -20°C as received.
Stability:	Stable for 12 months from date of receipt.
Predicted Protein Size:	50.4 kDa
Gene Name:	Zic family member 3
Database Link:	<a href="#">NP_003404</a> <a href="#">Entrez Gene 22773 Mouse</a> <a href="#">Entrez Gene 7547 Human</a> <a href="#">O60481</a>
Background:	This gene encodes a member of the ZIC family of C2H2-type zinc finger proteins. This nuclear protein probably functions as a transcription factor in early stages of left-right body axis formation. Mutations in this gene cause X-linked visceral heterotaxy, which includes congenital heart disease and left-right axis defects in organs. [provided by RefSeq, Jul 2008]
Synonyms:	HTX; HTX1; VACTERLX; ZNF203



[View online »](#)

Protein Families: Druggable Genome, Embryonic stem cells, ES Cell Differentiation/IPS

### Product images:



HEK293T cells were transfected with the pCMV6-ENTRY control (Cat# [PS100001], Left lane) or pCMV6-ENTRY ZIC3 (Cat# [RC220375], Right lane) cDNA for 48 hrs and lysed. Equivalent amounts of cell lysates (5 ug per lane) were separated by SDS-PAGE and immunoblotted with anti-ZIC3 (Cat# [TA808167])(1:500). Positive lysates [LY418705] (100ug) and [LC418705] (20ug) can be purchased separately from OriGene.