

## Product datasheet for **TA808159S**

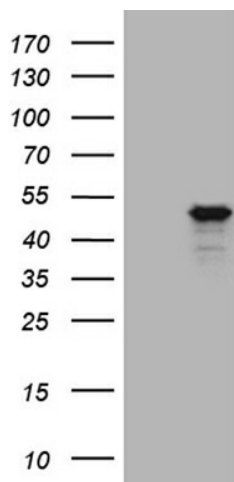
### G protein alpha 16 (GNA15) Mouse Monoclonal Antibody [Clone ID: OTI1D3]

#### Product data:

|                         |  |
|-------------------------|--|
| Product Type:           | Primary Antibodies   |
| Clone Name:             | OTI1D3   |
| Applications:           | WB   |
| Recommended Dilution:   | WB 1:500   |
| Reactivity:             | Human, Rat   |
| Host:                   | Mouse  |
| Isotype:                | IgG1   |
| Clonality:              | Monoclonal   |
| Immunogen:              | Human recombinant protein fragment corresponding to amino acids 1-256 of human GNA15(NP_002059) produced in E.coli.  |
| Formulation:            | PBS (pH 7.3) containing 1% BSA, 50% glycerol and 0.02% sodium azide.   |
| Concentration:          | 1 mg/ml  |
| Purification:           | Purified from mouse ascites fluids or tissue culture supernatant by affinity chromatography (protein A/G)  |
| Conjugation:            | Unconjugated   |
| Storage:                | Store at -20°C as received.  |
| Stability:              | Stable for 12 months from date of receipt.   |
| Predicted Protein Size: | 43.4 kDa   |
| Gene Name:              | G protein subunit alpha 15   |
| Database Link:          | <a href="#">NP_002059</a><br><a href="#">Entrez Gene 89788 Rat</a> <a href="#">Entrez Gene 2769 Human</a><br><a href="#">P30679</a>                                    |
| Background:             | Guanine nucleotide-binding proteins (G proteins) are involved as modulators or transducers in various transmembrane signaling systems. [UniProtKB/Swiss-Prot Function] |
| Synonyms:               | GNA16  |
| Protein Families:       | Druggable Genome   |
| Protein Pathways:       | Calcium signaling pathway  |



[View online »](#)

**Product images:**

HEK293T cells were transfected with the pCMV6-ENTRY control (Left lane) or pCMV6-ENTRY GNA15 [RC202243], Right lane) cDNA for 48 hrs and lysed. Equivalent amounts of cell lysates (5 ug per lane) were separated by SDS-PAGE and immunoblotted with anti-GNA15 (1:500). Positive lysates [LY419560] (100ug) and [LC419560] (20ug) can be purchased separately from OriGene.