

## Product datasheet for **TA808159**

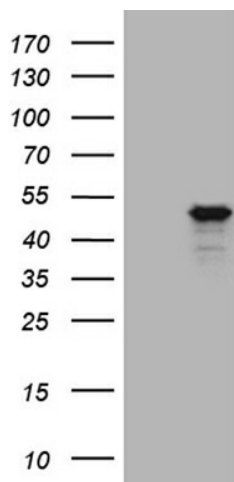
### G protein alpha 16 (GNA15) Mouse Monoclonal Antibody [Clone ID: OTI1D3]

#### Product data:

Product Type:	Primary Antibodies
Clone Name:	OTI1D3
Applications:	WB
Recommended Dilution:	WB 1:500
Reactivity:	Human, Rat
Host:	Mouse
Isotype:	IgG1
Clonality:	Monoclonal
Immunogen:	Human recombinant protein fragment corresponding to amino acids 1-256 of human GNA15(NP_002059) produced in E.coli.
Formulation:	PBS (pH 7.3) containing 1% BSA, 50% glycerol and 0.02% sodium azide.
Concentration:	1 mg/ml
Purification:	Purified from mouse ascites fluids or tissue culture supernatant by affinity chromatography (protein A/G)
Conjugation:	Unconjugated
Storage:	Store at -20°C as received.
Stability:	Stable for 12 months from date of receipt.
Predicted Protein Size:	43.4 kDa
Gene Name:	G protein subunit alpha 15
Database Link:	<a href="#">NP_002059</a> <a href="#">Entrez Gene 89788 Rat</a> <a href="#">Entrez Gene 2769 Human</a> <a href="#">P30679</a>
Background:	Guanine nucleotide-binding proteins (G proteins) are involved as modulators or transducers in various transmembrane signaling systems. [UniProtKB/Swiss-Prot Function]
Synonyms:	GNA16
Protein Families:	Druggable Genome
Protein Pathways:	Calcium signaling pathway



[View online »](#)

**Product images:**

HEK293T cells were transfected with the pCMV6-ENTRY control (Left lane) or pCMV6-ENTRY GNA15 [RC202243], Right lane) cDNA for 48 hrs and lysed. Equivalent amounts of cell lysates (5 ug per lane) were separated by SDS-PAGE and immunoblotted with anti-GNA15 (1:500). Positive lysates [LY419560] (100ug) and [LC419560] (20ug) can be purchased separately from OriGene.