

## Product datasheet for **TA808149BM**

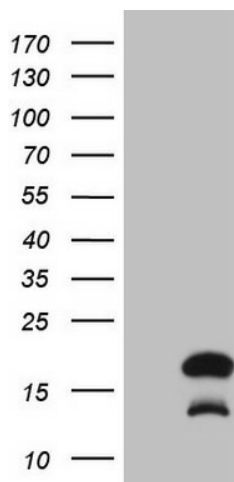
### **BTG2 Mouse Monoclonal Antibody (HRP conjugated) [Clone ID: OTI1G3]**

#### **Product data:**

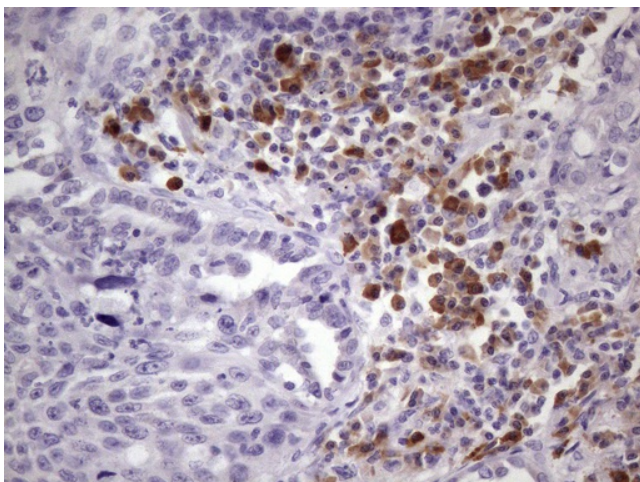
Product Type:	Primary Antibodies
Clone Name:	OTI1G3
Applications:	IHC, WB
Recommended Dilution:	WB 1:2000, IHC 1:150
Reactivity:	Human, Mouse, Rat
Host:	Mouse
Isotype:	IgG1
Clonality:	Monoclonal
Immunogen:	Full length human recombinant protein of human BTG2 (NP_006754) produced in E.coli.
Formulation:	PBS (pH 7.3) containing 1% BSA, 50% glycerol.
Concentration:	0.5 mg/ml
Purification:	Purified from mouse ascites fluids or tissue culture supernatant by affinity chromatography (protein A/G)
Conjugation:	HRP
Storage:	Store at -20°C as received.
Stability:	Stable for 12 months from date of receipt.
Predicted Protein Size:	17.2 kDa
Gene Name:	BTG family member 2
Database Link:	<a href="#">NP_006754</a> <a href="#">Entrez Gene 12227 Mouse</a> <a href="#">Entrez Gene 29619 Rat</a> <a href="#">Entrez Gene 7832 Human</a> <a href="#">P78543</a>
Background:	The protein encoded by this gene is a member of the BTG/Tob family. This family has structurally related proteins that appear to have antiproliferative properties. This encoded protein is involved in the regulation of the G1/S transition of the cell cycle. [provided by RefSeq, Jul 2008]
Synonyms:	APRO1; PC3; TIS21
Protein Families:	Transcription Factors



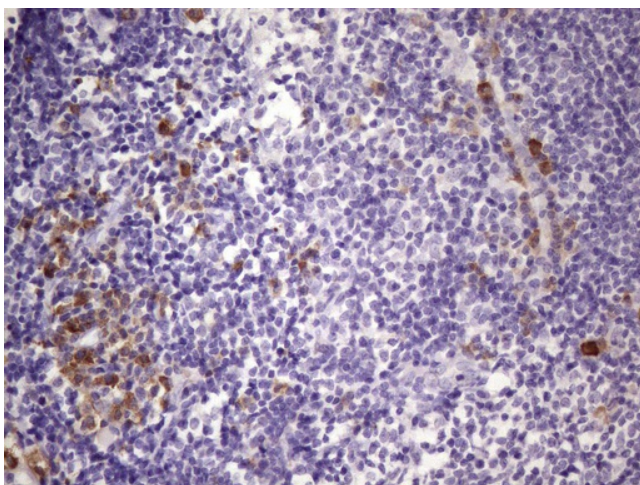
[View online »](#)

**Product images:**

HEK293T cells were transfected with the pCMV6-ENTRY control (Left lane) or pCMV6-ENTRY BTG2 ([RC214600], Right lane) cDNA for 48 hrs and lysed. Equivalent amounts of cell lysates (5 ug per lane) were separated by SDS-PAGE and immunoblotted with anti-BTG2 (1:2000). Positive lysates [LY402022] (100ug) and [LC402022] (20ug) can be purchased separately from OriGene.



Immunohistochemical staining of paraffin-embedded Carcinoma of Human lung tissue using anti-BTG2 mouse monoclonal antibody. (Heat-induced epitope retrieval by 1mM EDTA in 10mM Tris, pH8.5, 120°C for 3min, [TA808149]) (1:150)



Immunohistochemical staining of paraffin-embedded Human tonsil within the normal limits using anti-BTG2 mouse monoclonal antibody. (Heat-induced epitope retrieval by 1mM EDTA in 10mM Tris, pH8.5, 120°C for 3min, [TA808149]) (1:150)