

Product datasheet for **TA808142S**

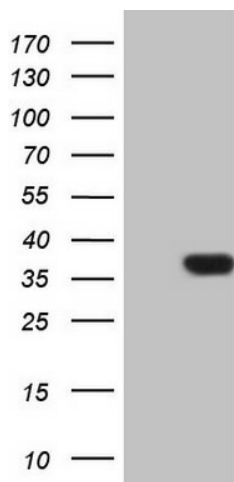
PSMG2 Mouse Monoclonal Antibody [Clone ID: OTI1E3]

Product data:

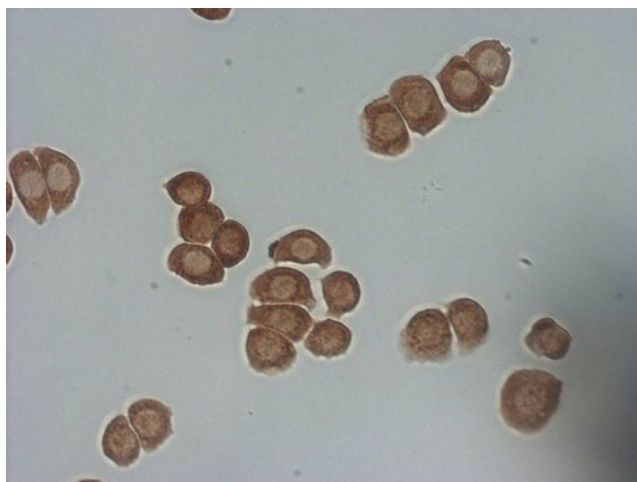
Product Type:	Primary Antibodies
Clone Name:	OTI1E3
Applications:	IF, WB
Recommended Dilution:	WB 1:2000, IF 1:100
Reactivity:	Human, Mouse, Rat
Host:	Mouse
Isotype:	IgG2b
Clonality:	Monoclonal
Immunogen:	Full length human recombinant protein of human PSMG2 (NP_064617) produced in E.coli.
Formulation:	PBS (pH 7.3) containing 1% BSA, 50% glycerol and 0.02% sodium azide.
Concentration:	1 mg/ml
Purification:	Purified from mouse ascites fluids or tissue culture supernatant by affinity chromatography (protein A/G)
Conjugation:	Unconjugated
Storage:	Store at -20°C as received.
Stability:	Stable for 12 months from date of receipt.
Predicted Protein Size:	29.2 kDa
Gene Name:	proteasome assembly chaperone 2
Database Link:	NP_064617 Entrez Gene 107047 Mouse Entrez Gene 291539 Rat Entrez Gene 56984 Human Q969U7
Synonyms:	CLAST3; HCCA3; HsT1707; MDS003; PAC2; TNFSF5IP1



[View online »](#)

Product images:

HEK293T cells were transfected with the pCMV6-ENTRY control (Left lane) or pCMV6-ENTRY PSMG2 [RC203422], Right lane) cDNA for 48 hrs and lysed. Equivalent amounts of cell lysates (5 ug per lane) were separated by SDS-PAGE and immunoblotted with anti-PSMG2 (1:2000). Positive lysates [LY412568] (100ug) and [LC412568] (20ug) can be purchased separately from OriGene.



Immunocytochemistry staining of HT-29 cells using anti-PSMG2 mouse monoclonal antibody [TA808142] (1:100).