

## Product datasheet for **TA808140S**

### SNRPB2 Mouse Monoclonal Antibody [Clone ID: OTI2A5]

#### Product data:

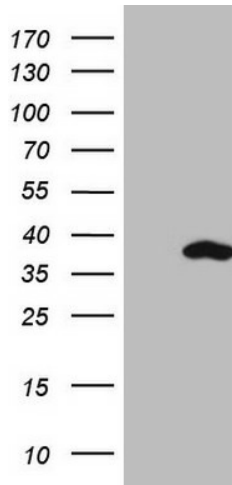
Product Type:	Primary Antibodies
Clone Name:	OTI2A5
Applications:	WB
Recommended Dilution:	WB 1:2000, IHC 1:150
Reactivity:	Human, Mouse, Rat
Host:	Mouse
Isotype:	IgG1
Clonality:	Monoclonal
Immunogen:	Full length human recombinant protein of human SNRPB2 (NP_937863) produced in E.coli.
Formulation:	PBS (pH 7.3) containing 1% BSA, 50% glycerol and 0.02% sodium azide.
Concentration:	1 mg/ml
Purification:	Purified from mouse ascites fluids or tissue culture supernatant by affinity chromatography (protein A/G)
Conjugation:	Unconjugated
Storage:	Store at -20°C as received.
Stability:	Stable for 12 months from date of receipt.
Predicted Protein Size:	25.3 kDa
Gene Name:	small nuclear ribonucleoprotein polypeptide B2
Database Link:	<a href="#">NP_937863</a> <a href="#">Entrez Gene 6629 Human P08579</a>
Background:	The protein encoded by this gene associates with stem loop IV of U2 small nuclear ribonucleoprotein (U2 snRNP) in the presence of snRNP-A'. The encoded protein may play a role in pre-mRNA splicing. Autoantibodies from patients with systemic lupus erythematosus frequently recognize epitopes on the encoded protein. Two transcript variants encoding the same protein have been found for this gene. [provided by RefSeq, Jul 2008]
Synonyms:	Msl1; U2B; U2B''



[View online »](#)

Protein Pathways: Spliceosome

### Product images:



HEK293T cells were transfected with the pCMV6-ENTRY control (Cat# [PS100001], Left lane) or pCMV6-ENTRY SNRPB2 (Cat# [RC207603], Right lane) cDNA for 48 hrs and lysed. Equivalent amounts of cell lysates (5 ug per lane) were separated by SDS-PAGE and immunoblotted with anti-SNRPB2 (Cat# [TA808140])(1:2000). Positive lysates [LY404952] (100ug) and [LC404952] (20ug) can be purchased separately from OriGene.