

## Product datasheet for **TA808139BM**

### **SNRPB2 Mouse Monoclonal Antibody (HRP conjugated) [Clone ID: OTI3A7]**

#### **Product data:**

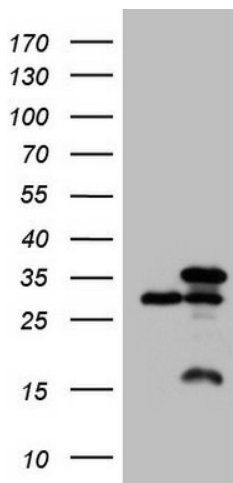
Product Type:	Primary Antibodies
Clone Name:	OTI3A7
Applications:	IF, IHC, WB
Recommended Dilution:	WB 1:2000, IF 1:100
Reactivity:	Human, Mouse, Rat
Host:	Mouse
Isotype:	IgG1
Clonality:	Monoclonal
Immunogen:	Full length human recombinant protein of human SNRPB2 (NP_937863) produced in E.coli.
Formulation:	PBS (pH 7.3) containing 1% BSA, 50% glycerol.
Concentration:	0.5 mg/ml
Purification:	Purified from mouse ascites fluids or tissue culture supernatant by affinity chromatography (protein A/G)
Conjugation:	HRP
Storage:	Store at -20°C as received.
Stability:	Stable for 12 months from date of receipt.
Predicted Protein Size:	25.3 kDa
Gene Name:	small nuclear ribonucleoprotein polypeptide B2
Database Link:	<a href="#">NP_937863</a> <a href="#">Entrez Gene 6629 Human</a> <a href="#">P08579</a>
Background:	The protein encoded by this gene associates with stem loop IV of U2 small nuclear ribonucleoprotein (U2 snRNP) in the presence of snRNP-A'. The encoded protein may play a role in pre-mRNA splicing. Autoantibodies from patients with systemic lupus erythematosus frequently recognize epitopes on the encoded protein. Two transcript variants encoding the same protein have been found for this gene. [provided by RefSeq, Jul 2008]
Synonyms:	Msl1; U2B; U2B''



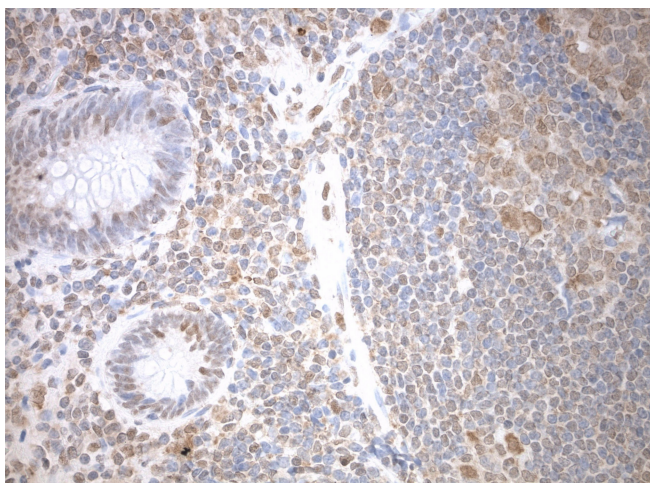
[View online »](#)

Protein Pathways: Spliceosome

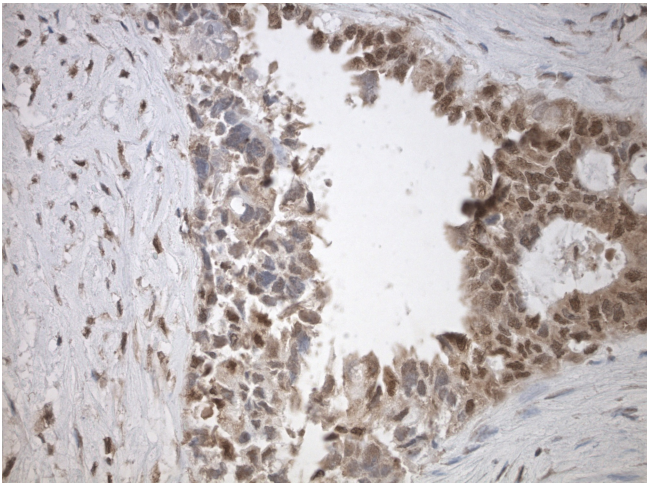
### Product images:



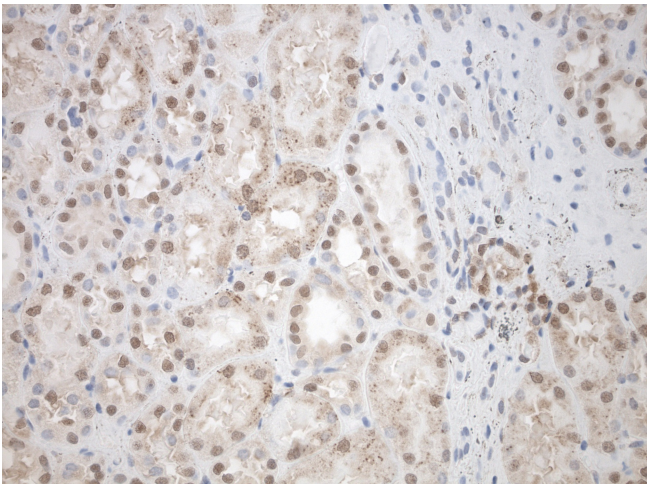
HEK293T cells were transfected with the pCMV6-ENTRY control (Left lane) or pCMV6-ENTRY SNRPB2 ([RC207603], Right lane) cDNA for 48 hrs and lysed. Equivalent amounts of cell lysates (5 ug per lane) were separated by SDS-PAGE and immunoblotted with anti-SNRPB2 (1:2000). Positive lysates [LY404952] (100ug) and [LC404952] (20ug) can be purchased separately from OriGene.



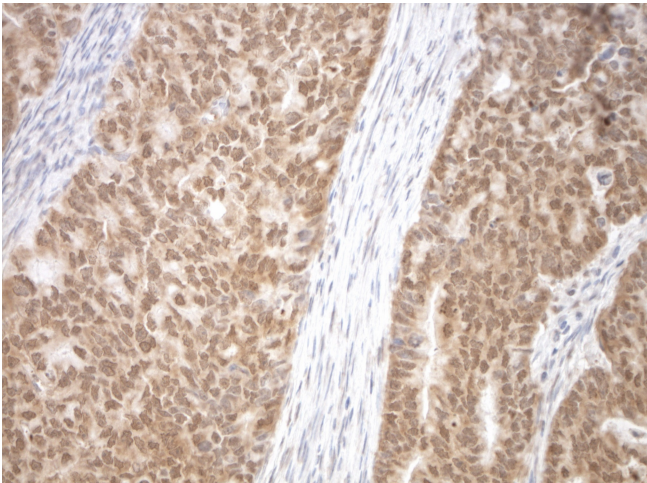
Immunohistochemical staining of paraffin-embedded appendix using anti-SNRPB2 C/N [TA808139] clone OT13A7 mouse monoclonal antibody. HIER TEE buffer pH9 ([B21-100]) at 110C for 10 min, anti-SNRPB2 diluted to 1:100. Detection was done with Polink1 Broad Mouse and Rabbit C/N [D11-18] with DAB Kit. Image 40x magnification.



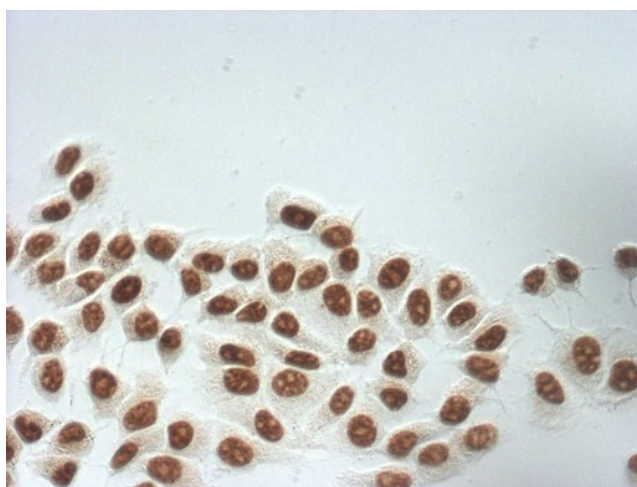
Immunohistochemical staining of paraffin-embedded endometrial cancer using anti-SNRPB2 C/N [TA808139] clone OTI3A7 mouse monoclonal antibody. HIER TEE buffer pH9 ([B21-100]) at 110C for 10 min, anti-SNRPB2 diluted to 1:100. Detection was done with Polink1 Broad Mouse and Rabbit C/N [D11-18] with DAB Kit. Image 40x magnification.



Immunohistochemical staining of paraffin-embedded normal kidney using anti-SNRPB2 C/N [TA808139] clone OTI3A7 mouse monoclonal antibody. HIER TEE buffer pH9 ([B21-100]) at 110C for 10 min, anti-SNRPB2 diluted to 1:100. Detection was done with Polink1 Broad Mouse and Rabbit C/N [D11-18] with DAB Kit. Image 40x magnification.



Immunohistochemical staining of paraffin-embedded endometrial cancer using anti-SNRPB2 C/N [TA808139] clone OTI3A7 mouse monoclonal antibody. HIER TEE buffer pH9 ([B21-100]) at 110C for 10 min, anti-SNRPB2 diluted to 1:100. Detection was done with Polink1 Broad Mouse and Rabbit C/N [D11-18] with DAB Kit. Image 40x magnification.



Immunocytochemistry staining of MCF-7 cells using anti-SNRPB2 mouse monoclonal antibody ([TA808139]) (1:100).