

## Product datasheet for **TA808132M**

### ATP dependent metalloprotease YME1L1 (YME1L1) Mouse Monoclonal Antibody [Clone ID: OTI2G10]

#### Product data:

Product Type:	Primary Antibodies
Clone Name:	OTI2G10
Applications:	WB
Recommended Dilution:	WB 1:500
Reactivity:	Human, Mouse, Rat
Host:	Mouse
Isotype:	IgG1
Clonality:	Monoclonal
Immunogen:	Human recombinant protein fragment corresponding to amino acids 26-345 of human YME1L1(NP_647474) produced in E.coli.
Formulation:	PBS (pH 7.3) containing 1% BSA, 50% glycerol and 0.02% sodium azide.
Concentration:	1 mg/ml
Purification:	Purified from mouse ascites fluids or tissue culture supernatant by affinity chromatography (protein A/G)
Conjugation:	Unconjugated
Storage:	Store at -20°C as received.
Stability:	Stable for 12 months from date of receipt.
Predicted Protein Size:	83.1 kDa
Gene Name:	YME1 like 1 ATPase
Database Link:	<a href="#">NP_647474</a> <a href="#">Entrez Gene 10730 Human</a> <a href="#">Q96TA2</a>



[View online »](#)

**Background:**

The protein encoded by this gene is the human ortholog of yeast mitochondrial AAA metalloprotease, Yme1p. It is localized in the mitochondria and can functionally complement a yme1 disruptant yeast strain. It is proposed that this gene plays a role in mitochondrial protein metabolism and could be involved in mitochondrial pathologies. Three transcript variants encoding different isoforms have been found for this gene. [provided by RefSeq, Dec 2011]

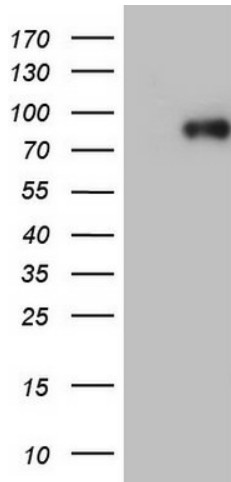
**Synonyms:**

FTSH, MEG4, PAMP, YME1L

**Protein Families:**

Druggable Genome, Protease

**Product images:**



HEK293T cells were transfected with the pCMV6-ENTRY control (Cat# [PS100001], Left lane) or pCMV6-ENTRY YME1L1 (Cat# [RC203167], Right lane) cDNA for 48 hrs and lysed. Equivalent amounts of cell lysates (5 ug per lane) were separated by SDS-PAGE and immunoblotted with anti-YME1L1 (Cat# [TA808132])(1:500). Positive lysates [LY408345] (100ug) and [LC408345] (20ug) can be purchased separately from OriGene.