

## Product datasheet for **TA808115AM**

### SDHB Mouse Monoclonal Antibody (Biotin conjugated) [Clone ID: OTI1E4]

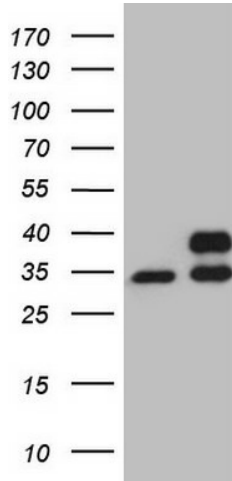
#### Product data:

Product Type:	Primary Antibodies
Clone Name:	OTI1E4
Applications:	WB
Recommended Dilution:	WB 1:500
Reactivity:	Human, Mouse, Rat
Host:	Mouse
Isotype:	IgG1
Clonality:	Monoclonal
Immunogen:	Full length human recombinant protein of human SDHB(NP_002991) produced in E.coli.
Formulation:	PBS (pH 7.3) containing 1% BSA, 50% glycerol and 0.02% sodium azide.
Concentration:	0.5 mg/ml
Purification:	Purified from mouse ascites fluids or tissue culture supernatant by affinity chromatography (protein A/G)
Conjugation:	Biotin
Storage:	Store at -20°C as received.
Stability:	Stable for 12 months from date of receipt.
Gene Name:	succinate dehydrogenase complex iron sulfur subunit B
Database Link:	<a href="#">NP_002991</a> <a href="#">Entrez Gene 67680 Mouse</a> <a href="#">Entrez Gene 298596 Rat</a> <a href="#">Entrez Gene 6390 Human</a> <a href="#">P21912</a>
Synonyms:	CWS2; IP; MC2DN4; PGL4; SDH; SDH1; SDH2; SDHIP
Protein Families:	Druggable Genome
Protein Pathways:	Alzheimer's disease, Citrate cycle (TCA cycle), Huntington's disease, Metabolic pathways, Oxidative phosphorylation, Parkinson's disease

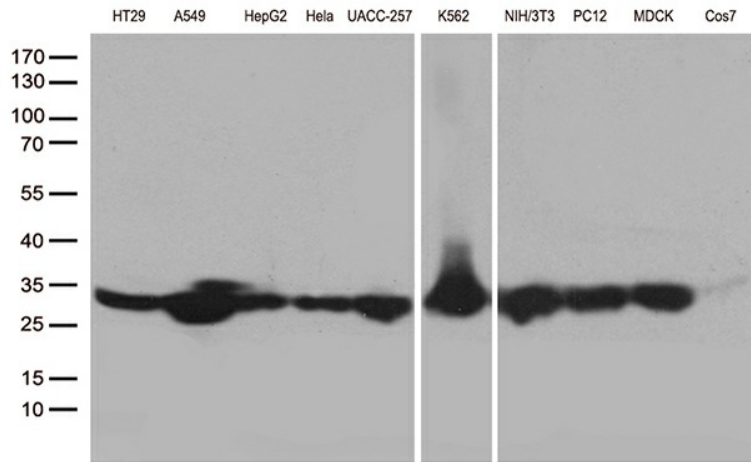


[View online »](#)

**Product images:**



HEK293T cells were transfected with the pCMV6-ENTRY control (Left lane) or pCMV6-ENTRY SDHB ([RC203182], Right lane) cDNA for 48 hrs and lysed. Equivalent amounts of cell lysates (5 ug per lane) were separated by SDS-PAGE and immunoblotted with anti-SDHB (1:500). Positive lysates [LY401052] (100ug) and [LC401052] (20ug) can be purchased separately from OriGene.



Western blot analysis of extracts (35ug) from 10 different cell lines by using anti-SDHB monoclonal antibody, 1:500