

## Product datasheet for **TA808110M**

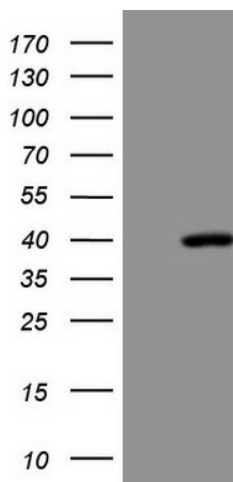
### **SPT3 (SUPT3H) Mouse Monoclonal Antibody [Clone ID: OTI1H7]**

#### **Product data:**

Product Type:	Primary Antibodies
Clone Name:	OTI1H7
Applications:	WB
Recommended Dilution:	WB 1:2000
Reactivity:	Human, Mouse, Rat
Host:	Mouse
Isotype:	IgG1
Clonality:	Monoclonal
Immunogen:	Full length human recombinant protein of human SUPT3H(NP_852001) produced in E.coli.
Formulation:	PBS (pH 7.3) containing 1% BSA, 50% glycerol and 0.02% sodium azide.
Concentration:	1 mg/ml
Purification:	Purified from mouse ascites fluids or tissue culture supernatant by affinity chromatography (protein A/G)
Conjugation:	Unconjugated
Storage:	Store at -20°C as received.
Stability:	Stable for 12 months from date of receipt.
Gene Name:	SPT3 homolog, SAGA and STAGA complex component
Database Link:	<a href="#">NP_852001</a> <a href="#">Entrez Gene 8464 Human</a> <a href="#">Q75486</a>
Synonyms:	SPT3; SPT3L
Protein Families:	Stem cell - Pluripotency, Transcription Factors

[View online »](#)

## Product images:



HEK293T cells were transfected with the pCMV6-ENTRY control (Left lane) or pCMV6-ENTRY SUPT3H ([RC208269], Right lane) cDNA for 48 hrs and lysed. Equivalent amounts of cell lysates (5 ug per lane) were separated by SDS-PAGE and immunoblotted with anti-SUPT3H (1:2000). Positive lysates [LY405748] (100ug) and [LC405748] (20ug) can be purchased separately from OriGene.