

## Product datasheet for **TA808053M**

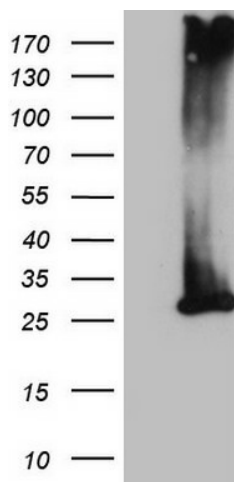
### MS4A12 Mouse Monoclonal Antibody [Clone ID: OTI3F9]

#### Product data:

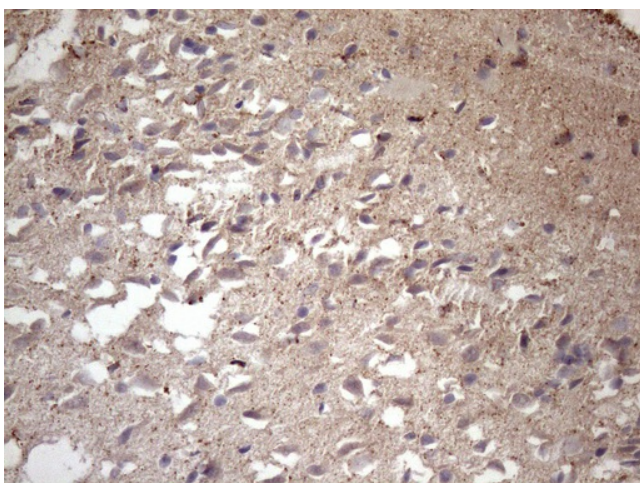
Product Type:	Primary Antibodies
Clone Name:	OTI3F9
Applications:	IHC, WB
Recommended Dilution:	WB 1:2000, IHC 1:150
Reactivity:	Human
Host:	Mouse
Isotype:	IgG1
Clonality:	Monoclonal
Immunogen:	Full length human recombinant protein of human MS4A12 (NP_060186) produced in HEK293T cell.
Formulation:	PBS (pH 7.3) containing 1% BSA, 50% glycerol and 0.02% sodium azide.
Concentration:	1 mg/ml
Purification:	Purified from mouse ascites fluids or tissue culture supernatant by affinity chromatography (protein A/G)
Conjugation:	Unconjugated
Storage:	Store at -20°C as received.
Stability:	Stable for 12 months from date of receipt.
Predicted Protein Size:	27.9 kDa
Gene Name:	membrane spanning 4-domains A12
Database Link:	<a href="#">NP_060186</a> <a href="#">Entrez Gene 54860 Human</a> <a href="#">Q9NXJ0</a>
Synonyms:	Ms4a10
Protein Families:	Druggable Genome, Transmembrane


[View online »](#)

## Product images:



HEK293T cells were transfected with the pCMV6-ENTRY control (Left lane) or pCMV6-ENTRY MS4A12 ([RC206473], Right lane) cDNA for 48 hrs and lysed. Equivalent amounts of cell lysates (5 ug per lane) were separated by SDS-PAGE and immunoblotted with anti-MS4A12 (1:2000). Positive lysates [LY413597] (100ug) and [LC413597] (20ug) can be purchased separately from OriGene.



Immunohistochemical staining of paraffin-embedded Human adult brain tissue using anti-MS4A12 mouse monoclonal antibody. Heat-induced epitope retrieval by EDTA solution buffer pH 8.0 at 120°C for 3 min.