

## Product datasheet for **TA808044M**

### ZIC3 Mouse Monoclonal Antibody [Clone ID: OTI1G7]

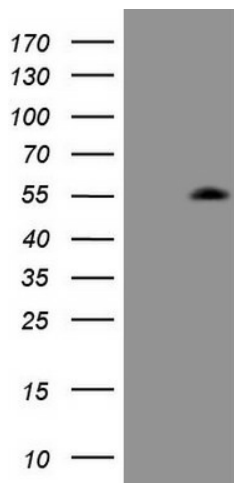
#### Product data:

|                         |   |
|-------------------------|---|
| Product Type:           | Primary Antibodies  |
| Clone Name:             | OTI1G7  |
| Applications:           | WB  |
| Recommended Dilution:   | WB 1:2000   |
| Reactivity:             | Human, Mouse  |
| Host:                   | Mouse   |
| Isotype:                | IgG1  |
| Clonality:              | Monoclonal  |
| Immunogen:              | Human recombinant protein fragment corresponding to amino acids 242-467 of human ZIC3(NP_003404) produced in E.coli.  |
| Formulation:            | PBS (pH 7.3) containing 1% BSA, 50% glycerol and 0.02% sodium azide.  |
| Concentration:          | 1 mg/ml   |
| Purification:           | Purified from mouse ascites fluids or tissue culture supernatant by affinity chromatography (protein A/G)   |
| Conjugation:            | Unconjugated  |
| Storage:                | Store at -20°C as received.   |
| Stability:              | Stable for 12 months from date of receipt.  |
| Predicted Protein Size: | 50.4 kDa  |
| Gene Name:              | Zic family member 3   |
| Database Link:          | <a href="#">NP_003404</a><br><a href="#">Entrez Gene 22773 Mouse</a> <a href="#">Entrez Gene 7547 Human</a><br><a href="#">O60481</a>   |
| Background:             | This gene encodes a member of the ZIC family of C2H2-type zinc finger proteins. This nuclear protein probably functions as a transcription factor in early stages of left-right body axis formation. Mutations in this gene cause X-linked visceral heterotaxy, which includes congenital heart disease and left-right axis defects in organs. [provided by RefSeq, Jul 2008] |
| Synonyms:               | HTX; HTX1; VACTERLX; ZNF203   |


[View online »](#)

**Protein Families:** Druggable Genome, Embryonic stem cells, ES Cell Differentiation/IPS

**Product images:**



HEK293T cells were transfected with the pCMV6-ENTRY control (Left lane) or pCMV6-ENTRY ZIC3 ([RC220375], Right lane) cDNA for 48 hrs and lysed. Equivalent amounts of cell lysates (5 ug per lane) were separated by SDS-PAGE and immunoblotted with anti-ZIC3 (1:2000). Positive lysates [LY418705] (100ug) and [LC418705] (20ug) can be purchased separately from OriGene.