

Product datasheet for **TA808044**

ZIC3 Mouse Monoclonal Antibody [Clone ID: OTI1G7]

Product data:

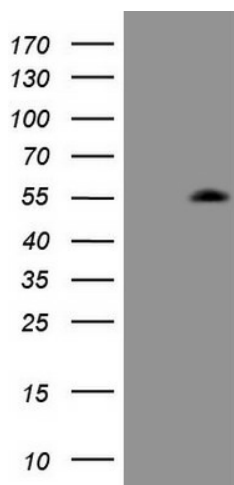
Product Type:	Primary Antibodies
Clone Name:	OTI1G7
Applications:	WB
Recommended Dilution:	WB 1:2000
Reactivity:	Human, Mouse
Host:	Mouse
Isotype:	IgG1
Clonality:	Monoclonal
Immunogen:	Human recombinant protein fragment corresponding to amino acids 242-467 of human ZIC3(NP_003404) produced in E.coli.
Formulation:	PBS (pH 7.3) containing 1% BSA, 50% glycerol and 0.02% sodium azide.
Concentration:	1 mg/ml
Purification:	Purified from mouse ascites fluids or tissue culture supernatant by affinity chromatography (protein A/G)
Conjugation:	Unconjugated
Storage:	Store at -20°C as received.
Stability:	Stable for 12 months from date of receipt.
Predicted Protein Size:	50.4 kDa
Gene Name:	Zic family member 3
Database Link:	NP_003404 Entrez Gene 22773 Mouse Entrez Gene 7547 Human O60481
Background:	This gene encodes a member of the ZIC family of C2H2-type zinc finger proteins. This nuclear protein probably functions as a transcription factor in early stages of left-right body axis formation. Mutations in this gene cause X-linked visceral heterotaxy, which includes congenital heart disease and left-right axis defects in organs. [provided by RefSeq, Jul 2008]
Synonyms:	HTX; HTX1; VACTERLX; ZNF203



[View online »](#)

Protein Families: Druggable Genome, Embryonic stem cells, ES Cell Differentiation/IPS

Product images:



HEK293T cells were transfected with the pCMV6-ENTRY control (Left lane) or pCMV6-ENTRY ZIC3 ([RC220375], Right lane) cDNA for 48 hrs and lysed. Equivalent amounts of cell lysates (5 ug per lane) were separated by SDS-PAGE and immunoblotted with anti-ZIC3 (1:2000). Positive lysates [LY418705] (100ug) and [LC418705] (20ug) can be purchased separately from OriGene.