

Product datasheet for **TA808041S**

MED30 Mouse Monoclonal Antibody [Clone ID: OTI3B3]

Product data:

Product Type:	Primary Antibodies
Clone Name:	OTI3B3
Applications:	WB
Recommended Dilution:	WB 1:2000
Reactivity:	Human, Mouse, Rat
Host:	Mouse
Isotype:	IgG1
Clonality:	Monoclonal
Immunogen:	Full length human recombinant protein of human MED30 (NP_542382) produced in E.coli.
Formulation:	PBS (pH 7.3) containing 1% BSA, 50% glycerol and 0.02% sodium azide.
Concentration:	1 mg/ml
Purification:	Purified from mouse ascites fluids or tissue culture supernatant by affinity chromatography (protein A/G)
Conjugation:	Unconjugated
Storage:	Store at -20°C as received.
Stability:	Stable for 12 months from date of receipt.
Predicted Protein Size:	20.1 kDa
Gene Name:	mediator complex subunit 30
Database Link:	NP_542382 Entrez Gene 90390 Human Q96HR3



[View online »](#)

Background:

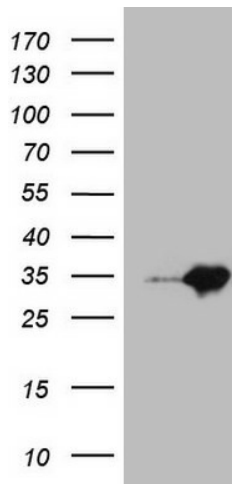
The multiprotein TRAP/Mediator complex facilitates gene expression through a wide variety of transcriptional activators. MED30 is a component of this complex that appears to be metazoan specific (Baek et al., 2002 [PubMed 11909976]). [supplied by OMIM, Nov 2010].
Transcript Variant: This variant (1) represents the longer transcript and encodes the longer isoform (1).
Sequence Note: This RefSeq record was created from transcript and genomic sequence data to make the sequence consistent with the reference genome assembly. The genomic coordinates used for the transcript record were based on transcript alignments.
Publication Note: This RefSeq record includes a subset of the publications that are available for this gene. Please see the Gene record to access additional publications. ##Evidence-Data-START## Transcript exon combination :: BC008226.1, CT000020.1 [ECO:0000332] RNAseq introns :: single sample supports all introns ERS025081, ERS025082 [ECO:0000348] ##Evidence-Data-END##

Synonyms:

MED30S; THRAP6; TRAP25

Protein Families:

Druggable Genome, Transcription Factors

Product images:

HEK293T cells were transfected with the pCMV6-ENTRY control (Cat# [PS100001], Left lane) or pCMV6-ENTRY MED30 (Cat# [RC202305], Right lane) cDNA for 48 hrs and lysed. Equivalent amounts of cell lysates (5 ug per lane) were separated by SDS-PAGE and immunoblotted with anti-MED30 (Cat# [TA808041])(1:2000). Positive lysates [LY409121] (100ug) and [LC409121] (20ug) can be purchased separately from OriGene.