

Product datasheet for **TA807989**

GM CSF (CSF2) Mouse Monoclonal Antibody [Clone ID: OTI6H1]

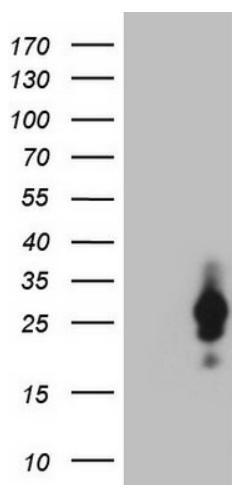
Product data:

Product Type:	Primary Antibodies
Clone Name:	OTI6H1
Applications:	WB
Recommended Dilution:	WB 1:2000
Reactivity:	Human
Host:	Mouse
Isotype:	IgG1
Clonality:	Monoclonal
Immunogen:	Human recombinant protein fragment corresponding to amino acids 18-144 of human CSF2(NP_000749) produced in E.coli.
Formulation:	PBS (pH 7.3) containing 1% BSA, 50% glycerol and 0.02% sodium azide.
Concentration:	1 mg/ml
Purification:	Purified from mouse ascites fluids or tissue culture supernatant by affinity chromatography (protein A/G)
Conjugation:	Unconjugated
Storage:	Store at -20°C as received.
Stability:	Stable for 12 months from date of receipt.
Predicted Protein Size:	14.4 kDa
Gene Name:	colony stimulating factor 2
Database Link:	NP_000749 Entrez Gene 1437 Human P04141
Background:	The protein encoded by this gene is a cytokine that controls the production, differentiation, and function of granulocytes and macrophages. The active form of the protein is found extracellularly as a homodimer. This gene has been localized to a cluster of related genes at chromosome region 5q31, which is known to be associated with interstitial deletions in the 5q- syndrome and acute myelogenous leukemia. Other genes in the cluster include those encoding interleukins 4, 5, and 13. [provided by RefSeq, Jul 2008]



[View online »](#)

Synonyms:	GMCSF
Protein Families:	Druggable Genome, ES Cell Differentiation/IPS, Secreted Protein
Protein Pathways:	Cytokine-cytokine receptor interaction, Fc epsilon RI signaling pathway, Hematopoietic cell lineage, Jak-STAT signaling pathway, Natural killer cell mediated cytotoxicity, T cell receptor signaling pathway

Product images:

HEK293T cells were transfected with the pCMV6-ENTRY control (Left lane) or pCMV6-ENTRY CSF2 ([RC211109], Right lane) cDNA for 48 hrs and lysed. Equivalent amounts of cell lysates (5 ug per lane) were separated by SDS-PAGE and immunoblotted with anti-CSF2 (1:2000). Positive lysates [LY400257] (100ug) and [LC400257] (20ug) can be purchased separately from OriGene.