

## Product datasheet for **TA807942BM**

### PD1 (PDCD1) Mouse Monoclonal Antibody (HRP conjugated) [Clone ID: OTI18H9]

#### Product data:

Product Type:	Primary Antibodies
Clone Name:	OTI18H9
Applications:	FC, WB
Recommended Dilution:	WB 1:2000, IHC 1:150
Reactivity:	Human
Host:	Mouse
Isotype:	IgG1
Clonality:	Monoclonal
Immunogen:	Full length human recombinant protein of human PDCD1 (NP_005009) produced in HEK293T cell.
Formulation:	PBS (pH 7.3) containing 1% BSA, 50% glycerol.
Concentration:	0.5 mg/ml
Purification:	Purified from mouse ascites fluids or tissue culture supernatant by affinity chromatography (protein A/G)
Conjugation:	HRP
Storage:	Store at -20°C as received.
Stability:	Stable for 12 months from date of receipt.
Predicted Protein Size:	29.2 kDa
Gene Name:	programmed cell death 1
Database Link:	<a href="#">NP_005009</a> <a href="#">Entrez Gene 5133 Human</a> <a href="#">Q15116</a>



[View online »](#)

**Background:**

This gene encodes a cell surface membrane protein of the immunoglobulin superfamily. This protein is expressed in pro-B-cells and is thought to play a role in their differentiation. In mice, expression of this gene is induced in the thymus when anti-CD3 antibodies are injected and large numbers of thymocytes undergo apoptosis. Mice deficient for this gene bred on a BALB/c background developed dilated cardiomyopathy and died from congestive heart failure. These studies suggest that this gene product may also be important in T cell function and contribute to the prevention of autoimmune diseases. [provided by RefSeq, Jul 2008]

**Synonyms:**

CD279; hPD-1; hPD-I; hSLE1; PD-1; PD1; SLEB2

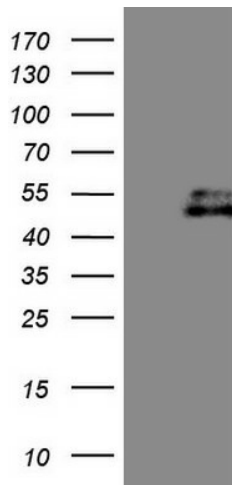
**Protein Families:**

Druggable Genome, Transmembrane

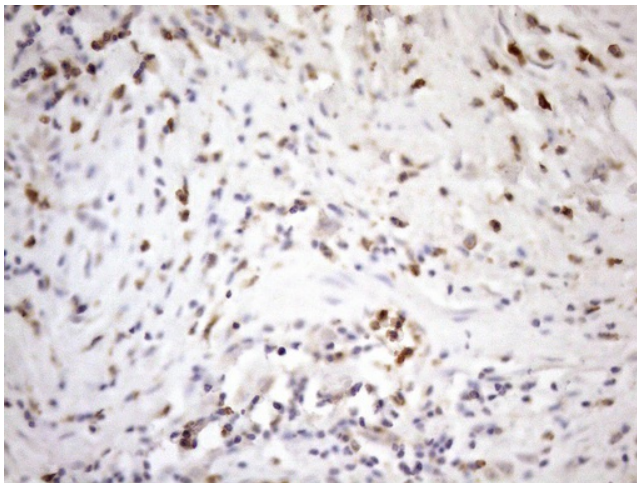
**Protein Pathways:**

Cell adhesion molecules (CAMs), T cell receptor signaling pathway

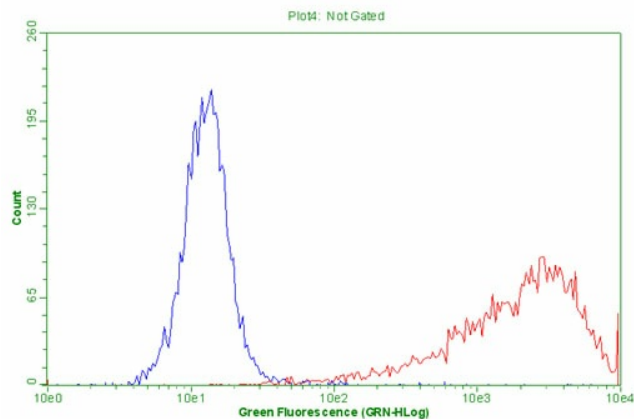
**Product images:**



HEK293T cells were transfected with the pCMV6-ENTRY control (Left lane) or pCMV6-ENTRY PDCD1 [RC210364], Right lane) cDNA for 48 hrs and lysed. Equivalent amounts of cell lysates (5 ug per lane) were separated by SDS-PAGE and immunoblotted with anti-PDCD1 (1:2000). Positive lysates [LY401555] (100ug) and [LC401555] (20ug) can be purchased separately from OriGene.



Immunohistochemical staining of paraffin-embedded Carcinoma of Human bladder tissue using anti-PDCD1 mouse monoclonal antibody. (Heat-induced epitope retrieval by 1mM EDTA in 10mM Tris buffer (pH8.5) at 120°C for 3min, [TA807942]) (1:150)



Flow cytometric Analysis of stable expression PD1 cells (Red) compared to negative control HEK293T cells (Blue) using anti-PDCD1 antibody ([TA807942]) (1:100).