

## Product datasheet for **TA807930M**

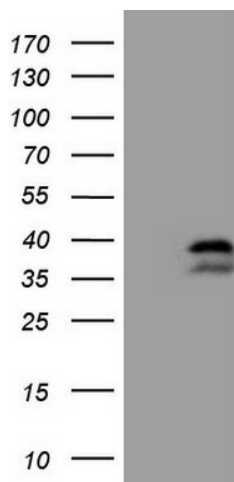
### **BOB1 (POU2AF1) Mouse Monoclonal Antibody [Clone ID: OTI2D3]**

#### **Product data:**

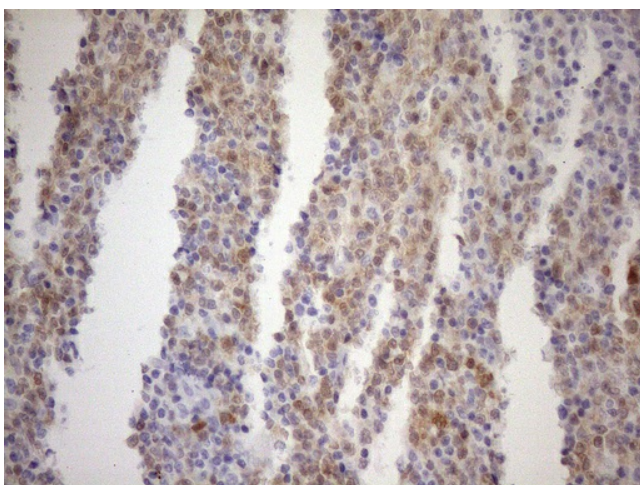
|                         |   |
|-------------------------|---|
| Product Type:           | Primary Antibodies  |
| Clone Name:             | OTI2D3  |
| Applications:           | FC, IHC, WB   |
| Recommended Dilution:   | WB 1:2000, IHC 1:150  |
| Reactivity:             | Human, Mouse, Rat   |
| Host:                   | Mouse   |
| Isotype:                | IgG1  |
| Clonality:              | Monoclonal  |
| Immunogen:              | Full length human recombinant protein of human POU2AF1(NP_006226) produced in E.coli.   |
| Formulation:            | PBS (pH 7.3) containing 1% BSA, 50% glycerol and 0.02% sodium azide.  |
| Concentration:          | 1 mg/ml   |
| Purification:           | Purified from mouse ascites fluids or tissue culture supernatant by affinity chromatography (protein A/G)   |
| Conjugation:            | Unconjugated  |
| Storage:                | Store at -20°C as received.   |
| Stability:              | Stable for 12 months from date of receipt.  |
| Predicted Protein Size: | 27.3 kDa  |
| Gene Name:              | POU class 2 associating factor 1  |
| Database Link:          | <a href="#">NP_006226</a><br><a href="#">Entrez Gene 18985 Mouse</a> <a href="#">Entrez Gene 690528 Rat</a> <a href="#">Entrez Gene 5450 Human</a><br><a href="#">Q16633</a>  |
| Background:             | Transcriptional coactivator that specifically associates with either OCT1 or OCT2. It boosts the OCT1 mediated promoter activity and to a lesser extent, that of OCT2. It has no intrinsic DNA-binding activity. It recognizes the POU domains of OCT1 and OCT2. It is essential for the response of B-cells to antigens and required for the formation of germinal centers.<br>[UniProtKB/Swiss-Prot Function] |
| Synonyms:               | BOB1; OBF-1; OBF1; OCAB   |


[View online »](#)

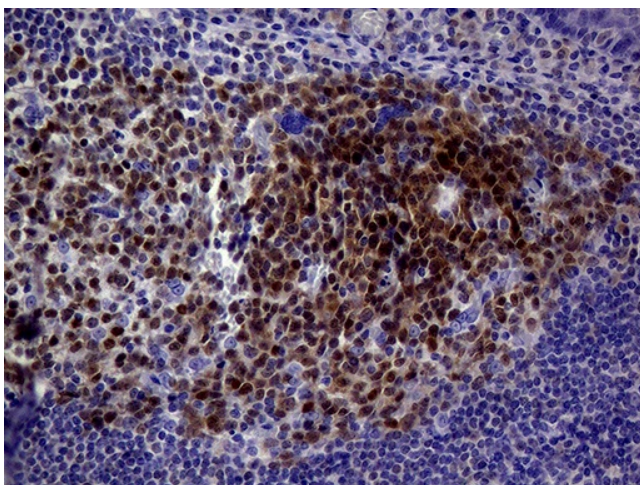
## Product images:



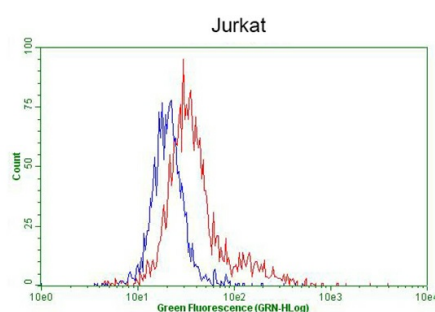
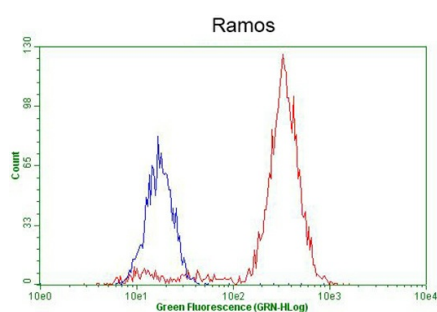
HEK293T cells were transfected with the pCMV6-ENTRY control (Cat# [PS100001], Left lane) or pCMV6-ENTRY POU2AF1 (Cat# [RC207562], Right lane) cDNA for 48 hrs and lysed. Equivalent amounts of cell lysates (5 ug per lane) were separated by SDS-PAGE and immunoblotted with anti-POU2AF1 (Cat# [TA807930])(1:2000). Positive lysates [LY416779] (100ug) and [LC416779] (20ug) can be purchased separately from OriGene.



Immunohistochemical staining of paraffin-embedded Human lymphoma tissue using anti-POU2AF1 mouse monoclonal antibody. Heat-induced epitope retrieval by EDTA solution buffer pH 8.0 at 120°C for 3 min.



Immunohistochemical staining of paraffin-embedded Human tonsil using anti-POU2AF1 mouse monoclonal antibody. Heat-induced epitope retrieval by EDTA solution buffer pH 8.0 at 120°C for 3 min.



Flow cytometric Analysis of penetrated Ramos cells, using anti-POU2AF1 antibody ([TA807930]), (Red), compared to a nonspecific negative control antibody (TA50011), (Blue). The right is Jurkat cells as negative control (1:100).