

Product datasheet for **TA807909BM**

CTBP2 Mouse Monoclonal Antibody (HRP conjugated) [Clone ID: OTI4D4]

Product data:

Product Type:	Primary Antibodies
Clone Name:	OTI4D4
Applications:	IHC, WB
Recommended Dilution:	WB 1:2000, IHC 1:150
Reactivity:	Human, Mouse, Rat
Host:	Mouse
Isotype:	IgG1
Clonality:	Monoclonal
Immunogen:	Human recombinant protein fragment corresponding to amino acids 233-336 of human CTBP2(NP_073713) produced in E.coli.
Formulation:	PBS (pH 7.3) containing 1% BSA, 50% glycerol.
Concentration:	0.5 mg/ml
Purification:	Purified from mouse ascites fluids or tissue culture supernatant by affinity chromatography (protein A/G)
Conjugation:	HRP
Storage:	Store at -20°C as received.
Stability:	Stable for 12 months from date of receipt.
Gene Name:	C-terminal binding protein 2
Database Link:	NP_073713 Entrez Gene 13017 Mouse Entrez Gene 81717 Rat Entrez Gene 1488 Human P56545



[View online »](#)

Background:

This gene produces alternative transcripts encoding two distinct proteins. One protein is a transcriptional repressor, while the other isoform is a major component of specialized synapses known as synaptic ribbons. Both proteins contain a NAD⁺ binding domain similar to NAD⁺-dependent 2-hydroxyacid dehydrogenases. A portion of the 3' untranslated region was used to map this gene to chromosome 21q21.3; however, it was noted that similar loci elsewhere in the genome are likely. Blast analysis shows that this gene is present on chromosome 10. Several transcript variants encoding two different isoforms have been found for this gene. [provided by RefSeq, Feb 2014]

Synonyms:

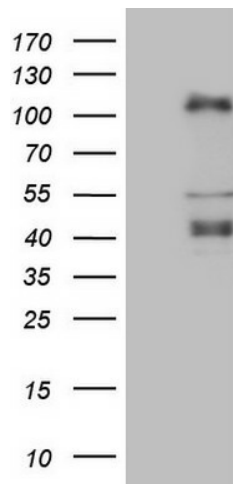
C-terminal binding protein 2; OTTHUMP00000020699; OTTHUMP00000020701; ribeye

Protein Families:

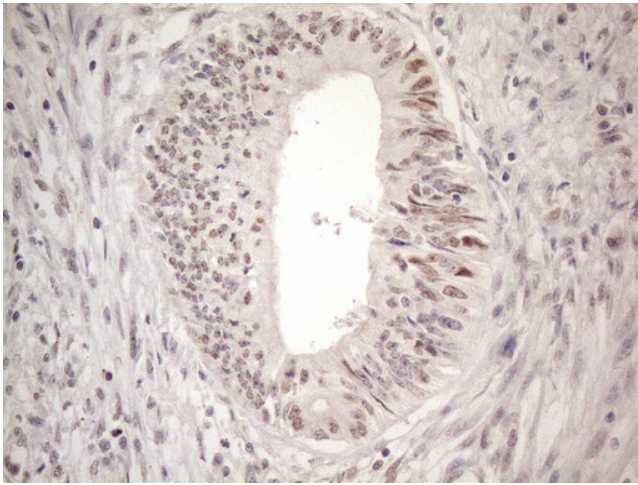
Stem cell - Pluripotency, Stem cell relevant signaling - Wnt Signaling pathway

Protein Pathways:

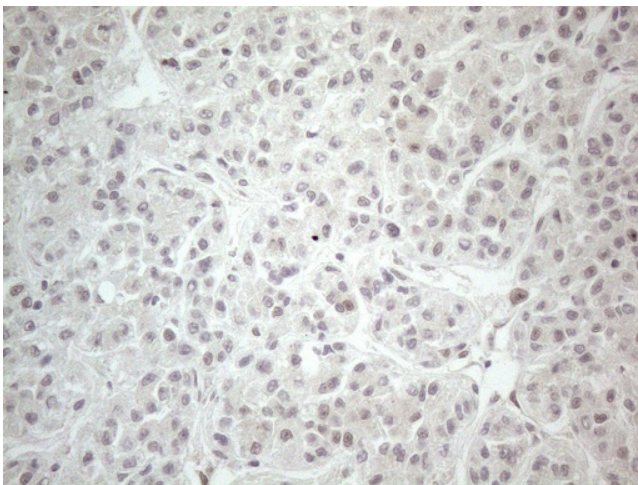
Chronic myeloid leukemia, Notch signaling pathway, Pathways in cancer, Wnt signaling pathway

Product images:

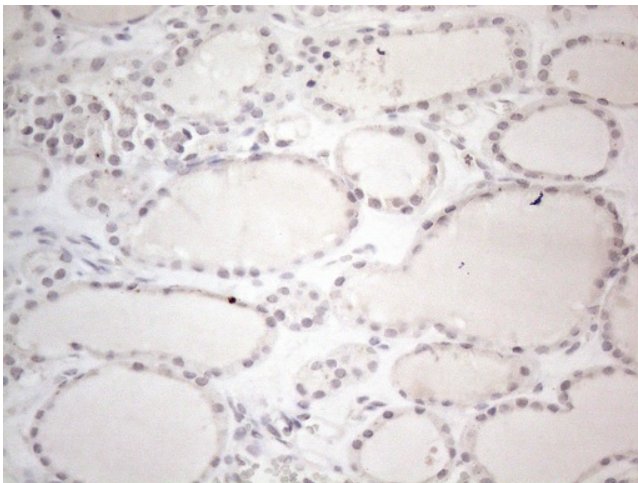
HEK293T cells were transfected with the pCMV6-ENTRY control (Cat# [PS100001], Left lane) or pCMV6-ENTRY CTBP2 (Cat# [RC213283], Right lane) cDNA for 48 hrs and lysed. Equivalent amounts of cell lysates (5 ug per lane) were separated by SDS-PAGE and immunoblotted with anti-CTBP2 (Cat# [TA807909])(1:2000).



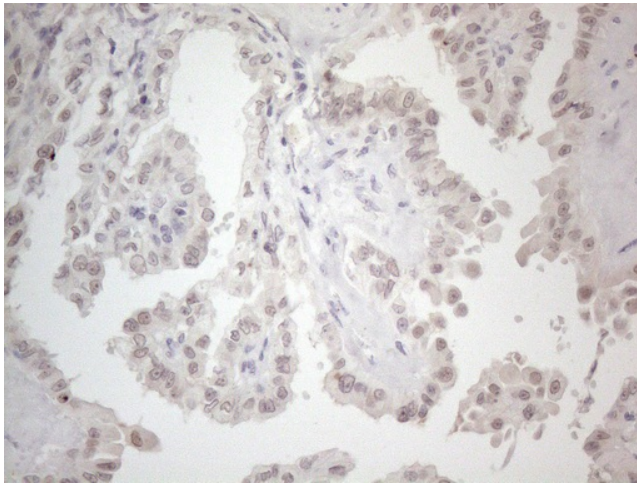
Immunohistochemical staining of paraffin-embedded Adenocarcinoma of Human colon tissue using anti-CTBP2 mouse monoclonal antibody. (Heat-induced epitope retrieval by 1mM EDTA in 10mM Tris buffer (pH8.5) at 120°C for 3min, [TA807909]) (1:150)



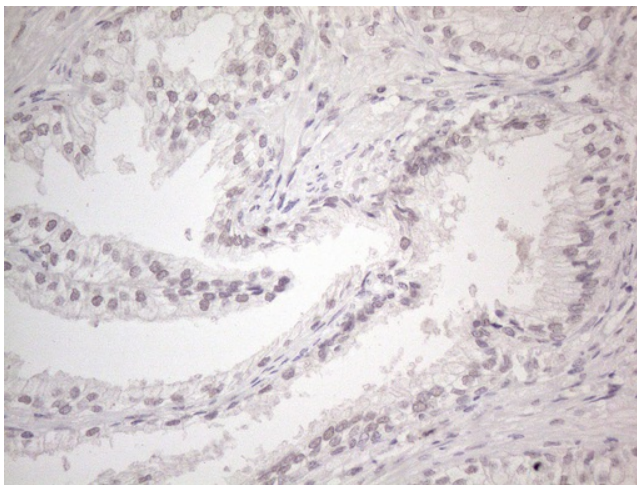
Immunohistochemical staining of paraffin-embedded Human liver tissue within the normal limits using anti-CTBP2 mouse monoclonal antibody. (Heat-induced epitope retrieval by 1mM EDTA in 10mM Tris buffer (pH8.5) at 120°C for 3min, [TA807909]) (1:150)



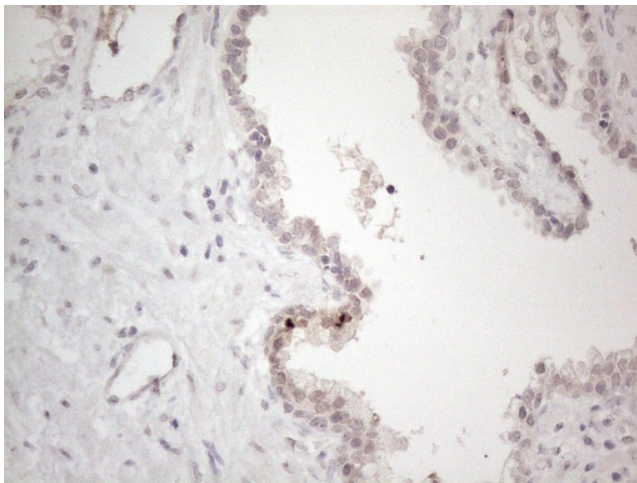
Immunohistochemical staining of paraffin-embedded Human thyroid tissue within the normal limits using anti-CTBP2 mouse monoclonal antibody. (Heat-induced epitope retrieval by 1mM EDTA in 10mM Tris buffer (pH8.5) at 120°C for 3min, [TA807909]) (1:150)



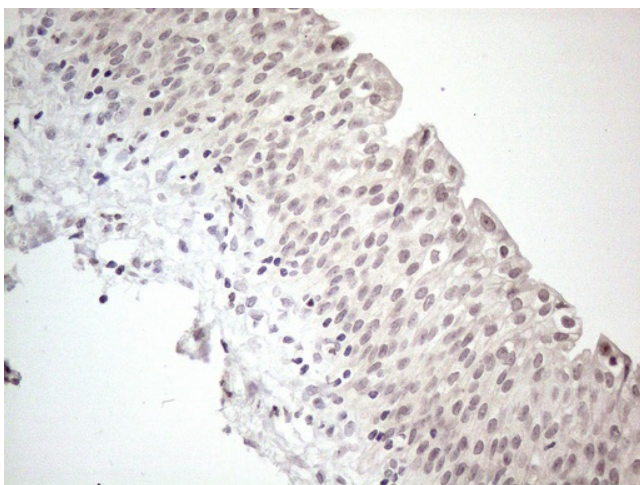
Immunohistochemical staining of paraffin-embedded Carcinoma of Human thyroid tissue using anti-CTBP2 mouse monoclonal antibody. (Heat-induced epitope retrieval by 1mM EDTA in 10mM Tris buffer (pH8.5) at 120°C for 3min, [TA807909]) (1:150)



Immunohistochemical staining of paraffin-embedded Human prostate tissue within the normal limits using anti-CTBP2 mouse monoclonal antibody. (Heat-induced epitope retrieval by 1mM EDTA in 10mM Tris buffer (pH8.5) at 120°C for 3min, [TA807909]) (1:150)



Immunohistochemical staining of paraffin-embedded Carcinoma of Human prostate tissue using anti-CTBP2 mouse monoclonal antibody. (Heat-induced epitope retrieval by 1mM EDTA in 10mM Tris buffer (pH8.5) at 120°C for 3min, [TA807909]) (1:150)



Immunohistochemical staining of paraffin-embedded Human bladder tissue within the normal limits using anti-CTBP2 mouse monoclonal antibody. (Heat-induced epitope retrieval by 1mM EDTA in 10mM Tris buffer (pH8.5) at 120°C for 3min, [TA807909]) (1:150)