

## Product datasheet for **TA807886M**

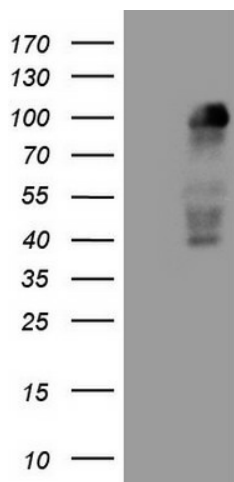
### MED15 Mouse Monoclonal Antibody [Clone ID: OTI1D5]

#### Product data:

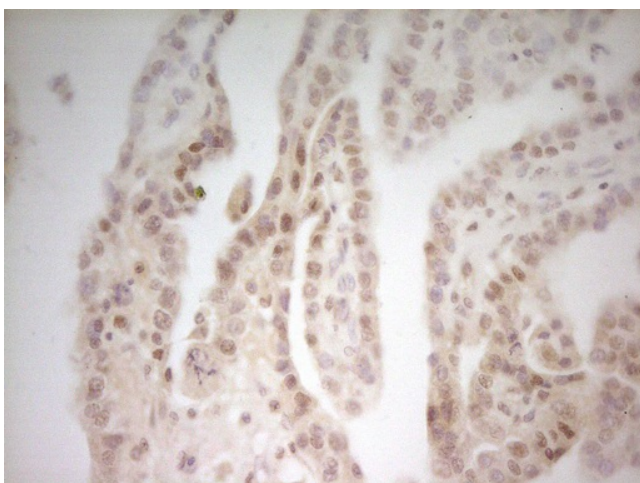
Product Type:	Primary Antibodies
Clone Name:	OTI1D5
Applications:	IHC, WB
Recommended Dilution:	WB 1:2000, IHC 1:150
Reactivity:	Human
Host:	Mouse
Isotype:	IgG1
Clonality:	Monoclonal
Immunogen:	Human recombinant protein fragment corresponding to amino acids 393-679 of human MED15(NP_056973) produced in E.coli.
Formulation:	PBS (pH 7.3) containing 1% BSA, 50% glycerol and 0.02% sodium azide.
Concentration:	1 mg/ml
Purification:	Purified from mouse ascites fluids or tissue culture supernatant by affinity chromatography (protein A/G)
Conjugation:	Unconjugated
Storage:	Store at -20°C as received.
Stability:	Stable for 12 months from date of receipt.
Predicted Protein Size:	82.4 kDa
Gene Name:	mediator complex subunit 15
Database Link:	<a href="#">NP_056973</a> <a href="#">Entrez Gene 51586 Human</a> <a href="#">Q96RN5</a>
Synonyms:	ARC105; CAG7A; CTG7A; PCQAP; TIG-1; TIG1; TNRC7
Protein Families:	Druggable Genome, Transcription Factors


[View online »](#)

## Product images:



HEK293T cells were transfected with the pCMV6-ENTRY control (Left lane) or pCMV6-ENTRY MED15 [RC204224], Right lane) cDNA for 48 hrs and lysed. Equivalent amounts of cell lysates (5 ug per lane) were separated by SDS-PAGE and immunoblotted with anti-MED15. Positive lysates [LY402473] (100ug) and [LC402473] (20ug) can be purchased separately from OriGene.



Immunohistochemical staining of paraffin-embedded Adenocarcinoma of Human ovary tissue using anti-MED15 mouse monoclonal antibody. Heat-induced epitope retrieval by EDTA solution buffer pH 8.0 at 120°C for 3 min.