

Product datasheet for **TA807883**

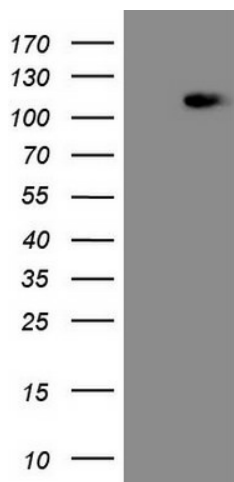
MED15 Mouse Monoclonal Antibody [Clone ID: OTI1A2]

Product data:

Product Type:	Primary Antibodies
Clone Name:	OTI1A2
Applications:	WB
Recommended Dilution:	WB 1:2000
Reactivity:	Human
Host:	Mouse
Isotype:	IgG1
Clonality:	Monoclonal
Immunogen:	Human recombinant protein fragment corresponding to amino acids 393-679 of human MED15(NP_056973) produced in E.coli.
Formulation:	PBS (pH 7.3) containing 1% BSA, 50% glycerol and 0.02% sodium azide.
Concentration:	1 mg/ml
Purification:	Purified from mouse ascites fluids or tissue culture supernatant by affinity chromatography (protein A/G)
Conjugation:	Unconjugated
Storage:	Store at -20°C as received.
Stability:	Stable for 12 months from date of receipt.
Predicted Protein Size:	82.4 kDa
Gene Name:	mediator complex subunit 15
Database Link:	NP_056973 Entrez Gene 51586 Human Q96RN5
Synonyms:	ARC105; CAG7A; CTG7A; PCQAP; TIG-1; TIG1; TNRC7
Protein Families:	Druggable Genome, Transcription Factors



[View online »](#)

Product images:

HEK293T cells were transfected with the pCMV6-ENTRY control (Left lane) or pCMV6-ENTRY MED15 ([RC204224], Right lane) cDNA for 48 hrs and lysed. Equivalent amounts of cell lysates (5 ug per lane) were separated by SDS-PAGE and immunoblotted with anti-MED15. Positive lysates [LY402473] (100ug) and [LC402473] (20ug) can be purchased separately from OriGene.