

Product datasheet for **TA807880**

PD1 (PDCD1) Mouse Monoclonal Antibody [Clone ID: OTI4E10]

Product data:

Product Type:	Primary Antibodies
Clone Name:	OTI4E10
Applications:	FC
Recommended Dilution:	FLOW 1:50
Reactivity:	Human
Host:	Mouse
Isotype:	IgG2b
Clonality:	Monoclonal
Immunogen:	Full length human recombinant protein of human PDCD1 (NP_005009) produced in HEK293T cell.
Formulation:	PBS (pH 7.3) containing 1% BSA, 50% glycerol and 0.02% sodium azide.
Concentration:	1 mg/ml
Purification:	Purified from mouse ascites fluids or tissue culture supernatant by affinity chromatography (protein A/G)
Conjugation:	Unconjugated
Storage:	Store at -20°C as received.
Stability:	Stable for 12 months from date of receipt.
Predicted Protein Size:	29.2 kDa
Gene Name:	programmed cell death 1
Database Link:	NP_005009 Entrez Gene 5133 Human Q15116



[View online »](#)

Background:

This gene encodes a cell surface membrane protein of the immunoglobulin superfamily. This protein is expressed in pro-B-cells and is thought to play a role in their differentiation. In mice, expression of this gene is induced in the thymus when anti-CD3 antibodies are injected and large numbers of thymocytes undergo apoptosis. Mice deficient for this gene bred on a BALB/c background developed dilated cardiomyopathy and died from congestive heart failure. These studies suggest that this gene product may also be important in T cell function and contribute to the prevention of autoimmune diseases. [provided by RefSeq, Jul 2008]

Synonyms:

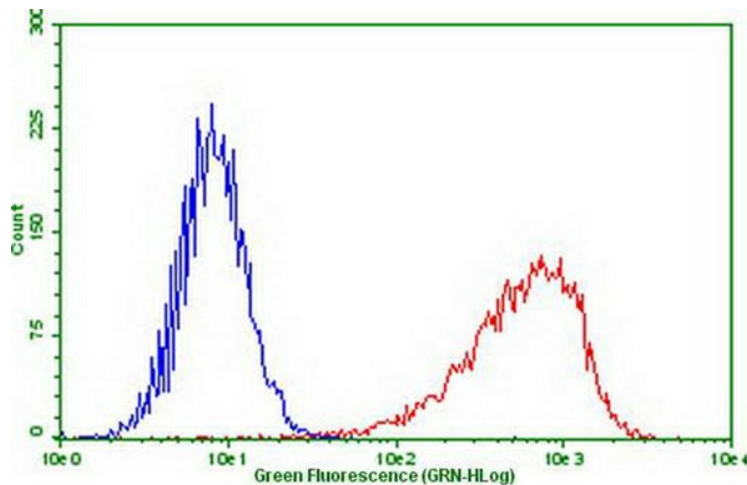
CD279; hPD-1; hPD-I; hSLE1; PD-1; PD1; SLEB2

Protein Families:

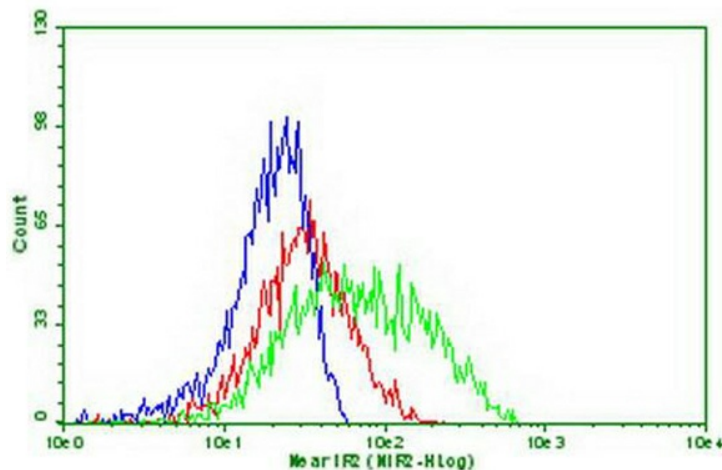
Druggable Genome, Transmembrane

Protein Pathways:

Cell adhesion molecules (CAMs), T cell receptor signaling pathway

Product images:


Flow cytometric Analysis of stable expression PDL1 cells using anti-PDCD1 antibody (TA807880) (Red) compared to a nonspecific negative control antibody (Blue) (1:50).



Flow cytometric Analysis of stable expression PDL1 ([RC213071]) cells using anti-PDCD1 antibody (TA807880) (blue) or 0.3ug/ml PD1-Fc fusion protein ([TP700199]) (green) or both (red), and detected by anti-Fc (human) IgG-FITC (1:50).