

Product datasheet for **TA807878M**

LCOR Mouse Monoclonal Antibody [Clone ID: OTI2A9]

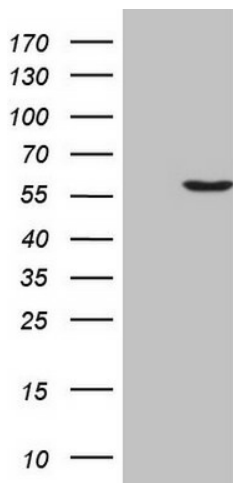
Product data:

Product Type:	Primary Antibodies
Clone Name:	OTI2A9
Applications:	WB
Recommended Dilution:	WB 1:2000
Reactivity:	Human, Mouse
Host:	Mouse
Isotype:	IgG2b
Clonality:	Monoclonal
Immunogen:	Human recombinant protein fragment corresponding to amino acids 204-433 of human LCOR(NP_115816) produced in E.coli.
Formulation:	PBS (pH 7.3) containing 1% BSA, 50% glycerol and 0.02% sodium azide.
Concentration:	1 mg/ml
Purification:	Purified from mouse ascites fluids or tissue culture supernatant by affinity chromatography (protein A/G)
Conjugation:	Unconjugated
Storage:	Store at -20°C as received.
Stability:	Stable for 12 months from date of receipt.
Predicted Protein Size:	46.8 kDa
Gene Name:	ligand dependent nuclear receptor corepressor
Database Link:	NP_115816 Entrez Gene 212391 Mouse Entrez Gene 84458 Human Q96JN0
Background:	LCOR is a transcriptional corepressor widely expressed in fetal and adult tissues that is recruited to agonist-bound nuclear receptors through a single LxxLL motif, also referred to as a nuclear receptor (NR) box (Fernandes et al., 2003 [PubMed 12535528]). [supplied by OMIM, Mar 2008]
Synonyms:	MLR2


[View online »](#)

Protein Families: Druggable Genome

Product images:



HEK293T cells were transfected with the pCMV6-ENTRY control (Left lane) or pCMV6-ENTRY LCOR ([RC224042], Right lane) cDNA for 48 hrs and lysed. Equivalent amounts of cell lysates (5 ug per lane) were separated by SDS-PAGE and immunoblotted with anti-LCOR (1:2000). Positive lysates [LY410134] (100ug) and [LC410134] (20ug) can be purchased separately from OriGene.