

Product datasheet for **TA807874**

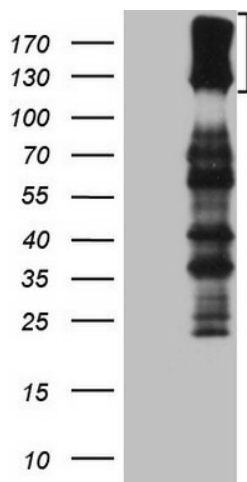
IL3RB (CSF2RB) Mouse Monoclonal Antibody [Clone ID: OTI1A6]

Product data:

Product Type:	Primary Antibodies
Clone Name:	OTI1A6
Applications:	WB
Recommended Dilution:	WB 1:2000
Reactivity:	Human
Host:	Mouse
Isotype:	IgG2b
Clonality:	Monoclonal
Immunogen:	Full length human recombinant protein of human CSF2RB (NP_000386) produced in HEK293T cell.
Formulation:	PBS (pH 7.3) containing 1% BSA, 50% glycerol and 0.02% sodium azide.
Concentration:	1 mg/ml
Purification:	Purified from mouse ascites fluids or tissue culture supernatant by affinity chromatography (protein A/G)
Conjugation:	Unconjugated
Storage:	Store at -20°C as received.
Stability:	Stable for 12 months from date of receipt.
Predicted Protein Size:	95.7 kDa
Gene Name:	colony stimulating factor 2 receptor beta common subunit
Database Link:	NP_000386 Entrez Gene 1439 Human P32927
Synonyms:	CD131; CDw131; IL3RB; IL5RB; SMDP5
Protein Families:	Druggable Genome, Transmembrane
Protein Pathways:	Apoptosis, Cytokine-cytokine receptor interaction, Jak-STAT signaling pathway



[View online »](#)

Product images:

HEK293T cells were transfected with the pCMV6-ENTRY control (Left lane) or pCMV6-ENTRY CSF2RB ([RC218581], Right lane) cDNA for 48 hrs and lysed. Equivalent amounts of cell lysates (5 ug per lane) were separated by SDS-PAGE and immunoblotted with anti-CSF2RB (1:2000). Positive lysates [LY424744] (100ug) and [LC424744] (20ug) can be purchased separately from OriGene.