

Product datasheet for **TA807863BM**

EGFL7 Mouse Monoclonal Antibody (HRP conjugated) [Clone ID: OTI5C9]

Product data:

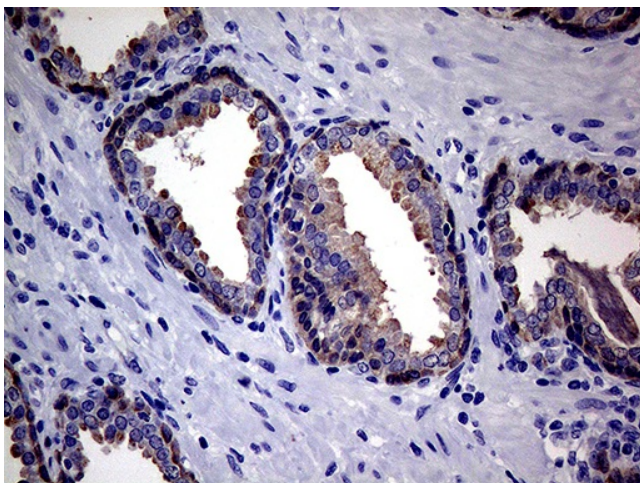
Product Type:	Primary Antibodies
Clone Name:	OTI5C9
Applications:	IHC
Recommended Dilution:	IHC 1:500
Reactivity:	Human
Host:	Mouse
Isotype:	IgG1
Clonality:	Monoclonal
Immunogen:	Human recombinant protein fragment corresponding to amino acids 24-273 of human EGFL7(NP_057299) produced in E.coli.
Formulation:	PBS (pH 7.3) containing 1% BSA, 50% glycerol.
Concentration:	0.5 mg/ml
Purification:	Purified from mouse ascites fluids or tissue culture supernatant by affinity chromatography (protein A/G)
Conjugation:	HRP
Storage:	Store at -20°C as received.
Stability:	Stable for 12 months from date of receipt.
Predicted Protein Size:	29.4 kDa
Gene Name:	EGF like domain multiple 7
Database Link:	NP_057299 Entrez Gene 51162 Human Q9UHF1
Background:	This gene encodes a secreted endothelial cell protein that contains two epidermal growth factor-like domains. The encoded protein may play a role in regulating vasculogenesis. This protein may be involved in the growth and proliferation of tumor cells. Alternate splicing results in multiple transcript variants. [provided by RefSeq, Feb 2012]
Synonyms:	NEU1; VE-STATIN; ZNEU1



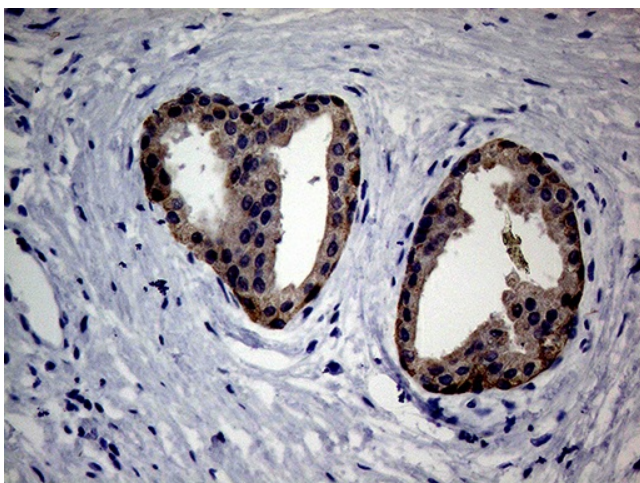
[View online »](#)

Protein Families: Secreted Protein

Product images:



Immunohistochemical staining of paraffin-embedded Human prostate tissue within the normal limits using anti-EGFL7 mouse monoclonal antibody. (Heat-induced epitope retrieval by 1mM EDTA in 10mM Tris buffer (pH8.5) at 120°C for 3min, [TA807863]) (1:500)



Immunohistochemical staining of paraffin-embedded Carcinoma of Human prostate tissue using anti-EGFL7 mouse monoclonal antibody. (Heat-induced epitope retrieval by 1mM EDTA in 10mM Tris buffer (pH8.5) at 120°C for 3min, [TA807863]) (1:500)