

Product datasheet for **TA807851M**

PD1 (PDCD1) Mouse Monoclonal Antibody [Clone ID: OTI17B10]

Product data:

| | |
|-------------------------|---|
| Product Type: | Primary Antibodies |
| Clone Name: | OTI17B10 |
| Applications: | FC, IF, Neutralize, WB |
| Recommended Dilution: | WB 1:2000, IF 1:100, FLOW 1:50 |
| Reactivity: | Human, Mouse |
| Host: | Mouse |
| Isotype: | IgG1 |
| Clonality: | Monoclonal |
| Immunogen: | Full length human recombinant protein of human PDCD1 (NP_005009) produced in HEK293T cell. |
| Formulation: | PBS (pH 7.3) containing 1% BSA, 50% glycerol and 0.02% sodium azide. |
| Concentration: | 1 mg/ml |
| Purification: | Purified from mouse ascites fluids or tissue culture supernatant by affinity chromatography (protein A/G) |
| Conjugation: | Unconjugated |
| Storage: | Store at -20°C as received. |
| Stability: | Stable for 12 months from date of receipt. |
| Predicted Protein Size: | 29.2 kDa |
| Gene Name: | programmed cell death 1 |
| Database Link: | NP_005009 Entrez Gene 18566 Mouse Entrez Gene 5133 Human Q15116 |


[View online »](#)

Background:

This gene encodes a cell surface membrane protein of the immunoglobulin superfamily. This protein is expressed in pro-B-cells and is thought to play a role in their differentiation. In mice, expression of this gene is induced in the thymus when anti-CD3 antibodies are injected and large numbers of thymocytes undergo apoptosis. Mice deficient for this gene bred on a BALB/c background developed dilated cardiomyopathy and died from congestive heart failure. These studies suggest that this gene product may also be important in T cell function and contribute to the prevention of autoimmune diseases. [provided by RefSeq, Jul

Synonyms:

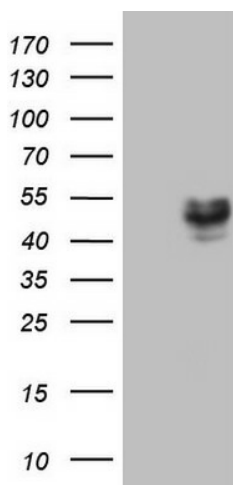
CD279; hPD-1; hPD-I; hSLE1; PD-1; PD1; SLEB2

Protein Families:

Druggable Genome, Transmembrane

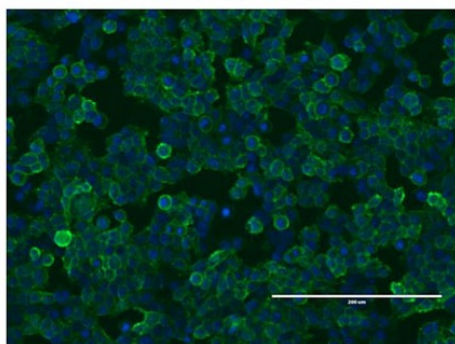
Protein Pathways:

Cell adhesion molecules (CAMs), T cell receptor signaling pathway

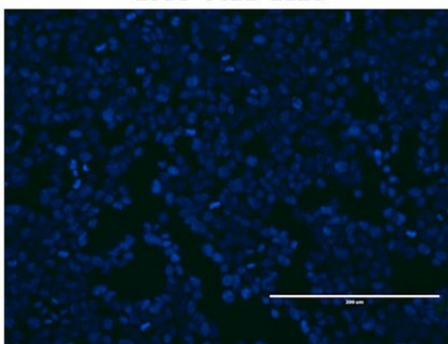
Product images:


HEK293T cells were transfected with the pCMV6-ENTRY control (Left lane) or pCMV6-ENTRY PDCD1 ([RC210364], Right lane) cDNA for 48 hrs and lysed. Equivalent amounts of cell lysates (5 ug per lane) were separated by SDS-PAGE and immunoblotted with anti-PDCD1 (1:2000). Positive lysates [LY401555] (100ug) and [LC401555] (20ug) can be purchased separately from OriGene.

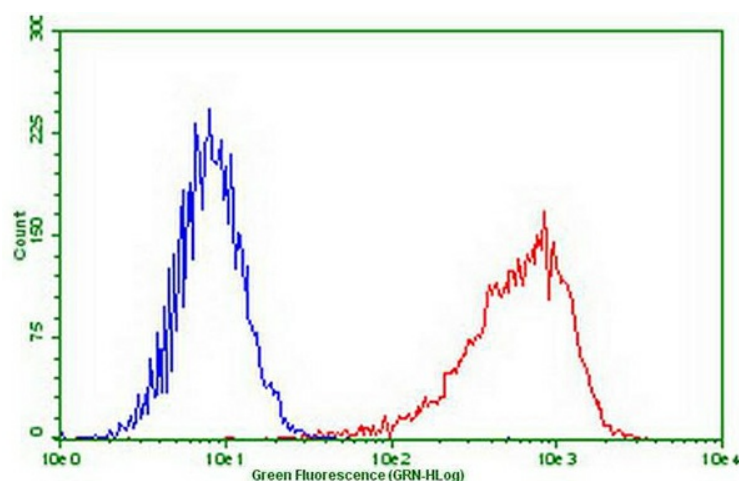
PD1 cell line



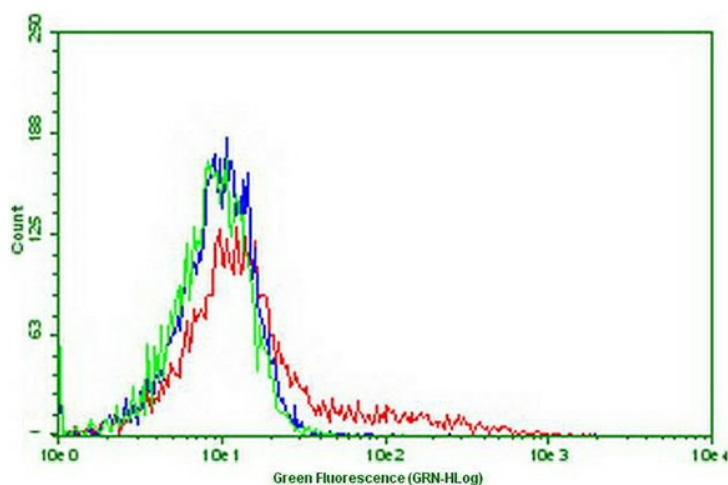
293T cell line



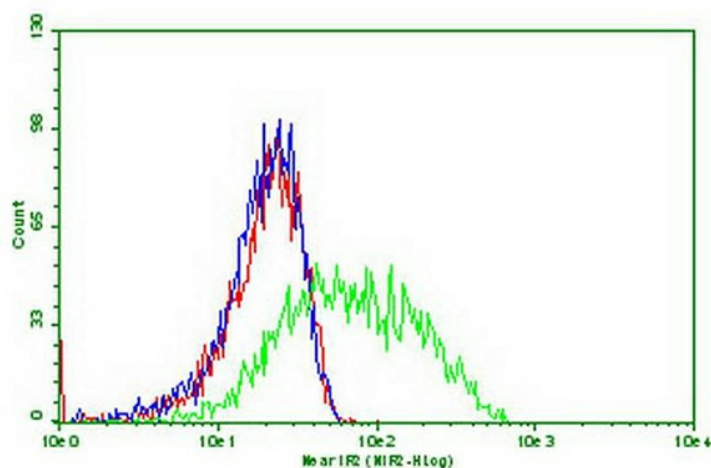
Immunofluorescent staining of PDCD1 ([RC210364])-stable-transfected HEK293T cells (left) labeling PDCD1 with mouse monoclonal antibody [TA807851] (green) and nucleus with Hoechst33342 (blue). HEK293T cells serve as negative control (right). n (1:100)



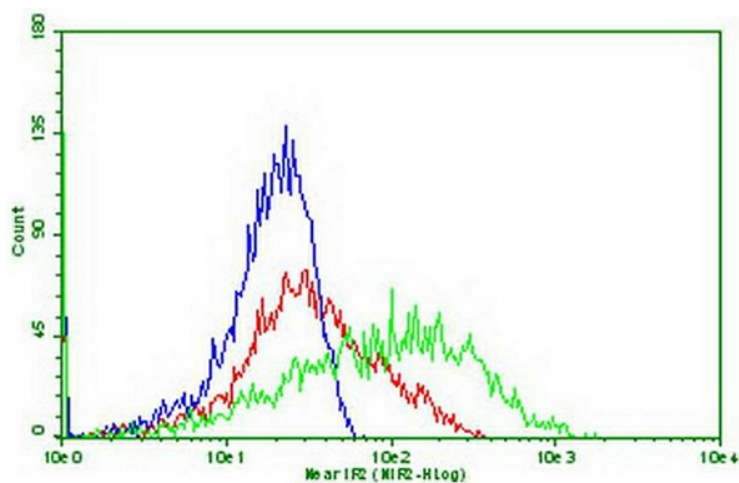
Flow cytometric Analysis of stable expression PD1 cells using anti-PDCD1 antibody ([TA807851]) (Red) compared to a nonspecific negative control antibody (Blue) (1:50).



HEK293T cells transfected with either mouse PD1 ([MR227347]) overexpress plasmid (Red) or empty vector control plasmid (Blue) were immunostained by anti-PDCD1 antibody ([TA807851]), compared to a nonspecific negative control antibody (green), and then analyzed by flow cytometry (1:50).



Flow cytometric Analysis of stable expression PDL1 ([RC213071]) cells using anti-PDCD1 antibody ([TA807851]) (blue) or 0.3ug/ml PD1-Fc fusion protein ([TP700199]) (green) or both (red), and detected by anti-Fc (human) IgG-FITC (1:50).



Flow cytometric Analysis of PDL2 ([RC224141]) transiently transfected HEK293T cells using anti-PDCD1 antibody ([TA807851]) (blue) or 1ug/ml PD1-Fc fusion protein ([TP700199]) (green) or both (red), and detected by anti-Fc (human) IgG-FITC (1:50).