

## Product datasheet for **TA807846AM**

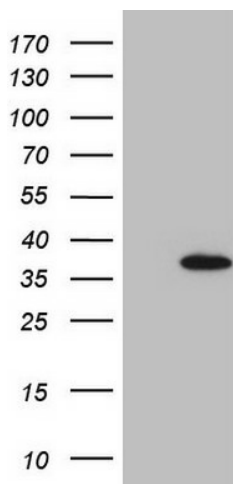
### EGFL7 Mouse Monoclonal Antibody (Biotin conjugated) [Clone ID: OTI4A5]

#### Product data:

Product Type:	Primary Antibodies
Clone Name:	OTI4A5
Applications:	WB
Recommended Dilution:	WB 1:2000
Reactivity:	Human
Host:	Mouse
Isotype:	IgG1
Clonality:	Monoclonal
Immunogen:	Human recombinant protein fragment corresponding to amino acids 24-273 of human EGFL7(NP_057299) produced in E.coli.
Formulation:	PBS (pH 7.3) containing 1% BSA, 50% glycerol and 0.02% sodium azide.
Concentration:	0.5 mg/ml
Purification:	Purified from mouse ascites fluids or tissue culture supernatant by affinity chromatography (protein A/G)
Conjugation:	Biotin
Storage:	Store at -20°C as received.
Stability:	Stable for 12 months from date of receipt.
Predicted Protein Size:	29.4 kDa
Gene Name:	EGF like domain multiple 7
Database Link:	<a href="#">NP_057299</a> <a href="#">Entrez Gene 51162 Human</a> <a href="#">Q9UHF1</a>
Synonyms:	NEU1; VE-STATIN; ZNEU1
Protein Families:	Secreted Protein



[View online »](#)

**Product images:**

HEK293T cells were transfected with the pCMV6-ENTRY control (Cat# [PS100001], Left lane) or pCMV6-ENTRY EGFL7 (Cat# [RC218849], Right lane) cDNA for 48 hrs and lysed. Equivalent amounts of cell lysates (5 ug per lane) were separated by SDS-PAGE and immunoblotted with anti-EGFL7 (Cat# [TA807846])(1:2000). Positive lysates [LY402519] (100ug) and [LC402519] (20ug) can be purchased separately from OriGene.