

Product datasheet for **TA807845**

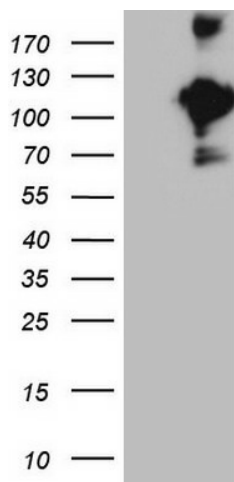
CD22 Mouse Monoclonal Antibody [Clone ID: OTI1E6]

Product data:

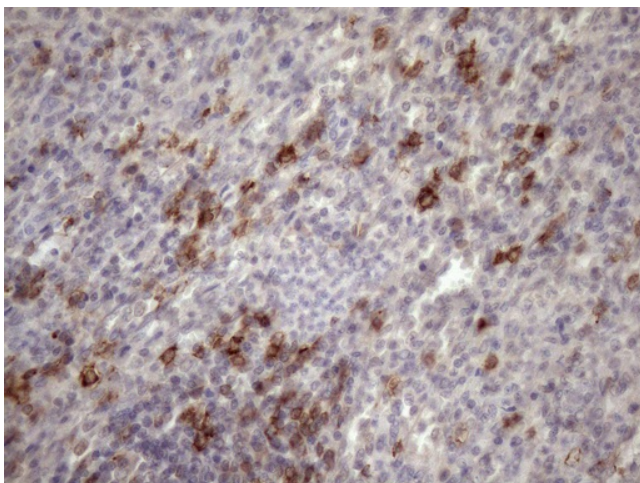
Product Type:	Primary Antibodies
Clone Name:	OTI1E6
Applications:	IHC, WB
Recommended Dilution:	WB 1:2000, IHC 1:150
Reactivity:	Human
Host:	Mouse
Isotype:	IgG1
Clonality:	Monoclonal
Immunogen:	Human recombinant protein fragment corresponding to amino acids 707-847 of human CD22(NP_001762) produced in E.coli.
Formulation:	PBS (pH 7.3) containing 1% BSA, 50% glycerol and 0.02% sodium azide.
Concentration:	1 mg/ml
Purification:	Purified from mouse ascites fluids or tissue culture supernatant by affinity chromatography (protein A/G)
Conjugation:	Unconjugated
Storage:	Store at -20°C as received.
Stability:	Stable for 12 months from date of receipt.
Gene Name:	CD22 molecule
Database Link:	NP_001762 Entrez Gene 933 Human P20273
Synonyms:	SIGLEC-2; SIGLEC2
Protein Families:	Druggable Genome, Transmembrane
Protein Pathways:	B cell receptor signaling pathway, Cell adhesion molecules (CAMs), Hematopoietic cell lineage



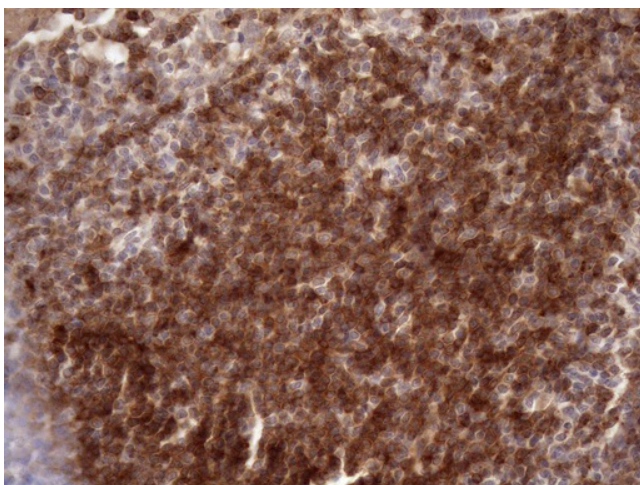
[View online »](#)

Product images:

HEK293T cells were transfected with the pCMV6-ENTRY control (Left lane) or pCMV6-ENTRY CD22 ([RC216939], Right lane) cDNA for 48 hrs and lysed. Equivalent amounts of cell lysates (5 ug per lane) were separated by SDS-PAGE and immunoblotted with anti-CD22 (1:2000).



Immunohistochemical staining of paraffin-embedded Human lymph node tissue within the normal limits using anti-CD22 mouse monoclonal antibody. (Heat-induced epitope retrieval by 1mM EDTA in 10mM Tris buffer (pH8.5) at 120°C for 3min, TA807845) (1:150)



Immunohistochemical staining of paraffin-embedded Human tonsil within the normal limits using anti-CD22 mouse monoclonal antibody. (Heat-induced epitope retrieval by 1mM EDTA in 10mM Tris buffer (pH8.5) at 120°C for 3min, TA807845) (1:150)