

## Product datasheet for **TA807844BM**

### CD22 Mouse Monoclonal Antibody (HRP conjugated) [Clone ID: OTI8E6]

#### Product data:

Product Type:	Primary Antibodies
Clone Name:	OTI8E6
Applications:	WB
Recommended Dilution:	WB 1:2000
Reactivity:	Human
Host:	Mouse
Isotype:	IgG1
Clonality:	Monoclonal
Immunogen:	Human recombinant protein fragment corresponding to amino acids 707-847 of human CD22(NP_001762) produced in E.coli.
Formulation:	PBS (pH 7.3) containing 1% BSA, 50% glycerol.
Concentration:	0.5 mg/ml
Purification:	Purified from mouse ascites fluids or tissue culture supernatant by affinity chromatography (protein A/G)
Conjugation:	HRP
Storage:	Store at -20°C as received.
Stability:	Stable for 12 months from date of receipt.
Gene Name:	CD22 molecule
Database Link:	<a href="#">NP_001762</a> <a href="#">Entrez Gene 933 Human</a> <a href="#">P20273</a>
Background:	Predominantly monomer of isoform CD22-beta. Also found as heterodimer of isoform CD22-beta and a shorter isoform. Interacts with PTPN6/SHP-1, LYN, SYK, PIK3R1/PIK3R2 and PLCG1 upon phosphorylation. Interacts with GRB2, INPP5D and SHC1 upon phosphorylation (By similarity). May form a complex with INPP5D/SHIP, GRB2 and SHC1. [UniProtKB/Swiss-Prot Function]
Synonyms:	SIGLEC-2; SIGLEC2

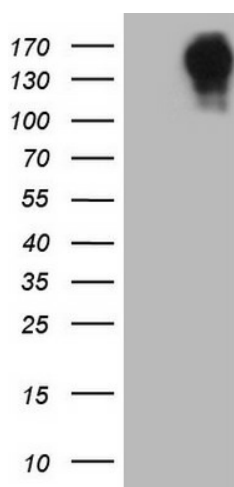


[View online »](#)

**Protein Families:** Druggable Genome, Transmembrane

**Protein Pathways:** B cell receptor signaling pathway, Cell adhesion molecules (CAMs), Hematopoietic cell lineage

**Product images:**



HEK293T cells were transfected with the pCMV6-ENTRY control (Left lane) or pCMV6-ENTRY CD22 ([RC216939], Right lane) cDNA for 48 hrs and lysed. Equivalent amounts of cell lysates (5 ug per lane) were separated by SDS-PAGE and immunoblotted with anti-CD22 (1:2000).