

## Product datasheet for **TA807836AM**

### IGF1 Receptor (IGF1R) Mouse Monoclonal Antibody (Biotin conjugated) [Clone ID: OTI11E4]

#### Product data:

Product Type:	Primary Antibodies
Clone Name:	OTI11E4
Applications:	FC, WB
Recommended Dilution:	WB 1:500
Reactivity:	Human, Mouse, Rat
Host:	Mouse
Isotype:	IgG1
Clonality:	Monoclonal
Immunogen:	Human recombinant protein fragment corresponding to amino acids 741-935 of human IGF1R(NP_000866) produced in Insect.
Formulation:	PBS (pH 7.3) containing 1% BSA, 50% glycerol and 0.02% sodium azide.
Concentration:	0.5 mg/ml
Purification:	Purified from mouse ascites fluids or tissue culture supernatant by affinity chromatography (protein A/G)
Conjugation:	Biotin
Storage:	Store at -20°C as received.
Stability:	Stable for 12 months from date of receipt.
Predicted Protein Size:	81 kDa
Gene Name:	insulin like growth factor 1 receptor
Database Link:	<a href="#">NP_000866</a> <a href="#">Entrez Gene 16001 Mouse</a> <a href="#">Entrez Gene 25718 Rat</a> <a href="#">Entrez Gene 3480 Human</a> <a href="#">P08069</a>
Background:	This receptor binds insulin-like growth factor with a high affinity. It has tyrosine kinase activity. The insulin-like growth factor I receptor plays a critical role in transformation events. Cleavage of the precursor generates alpha and beta subunits. It is highly overexpressed in most malignant tissues where it functions as an anti-apoptotic agent by enhancing cell survival. Alternatively spliced transcript variants encoding distinct isoforms have been found for this gene. [provided by RefSeq, May



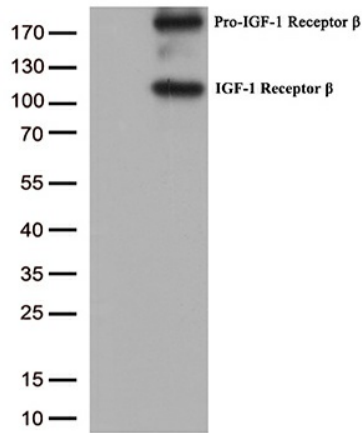
[View online »](#)

**Synonyms:** CD221; IGFI; IGFIR; JTK13

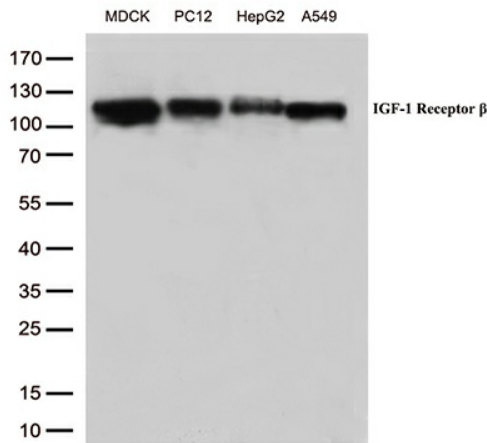
**Protein Families:** Druggable Genome, Protein Kinase, Transmembrane

**Protein Pathways:** Adherens junction, Colorectal cancer, Endocytosis, Focal adhesion, Glioma, Long-term depression, Melanoma, Oocyte meiosis, Pathways in cancer, Progesterone-mediated oocyte maturation, Prostate cancer

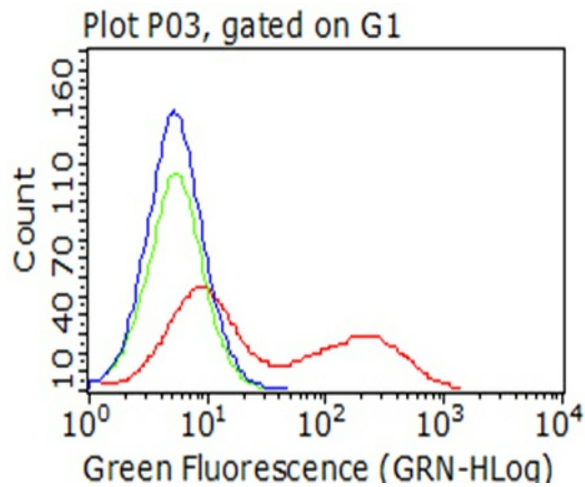
**Product images:**



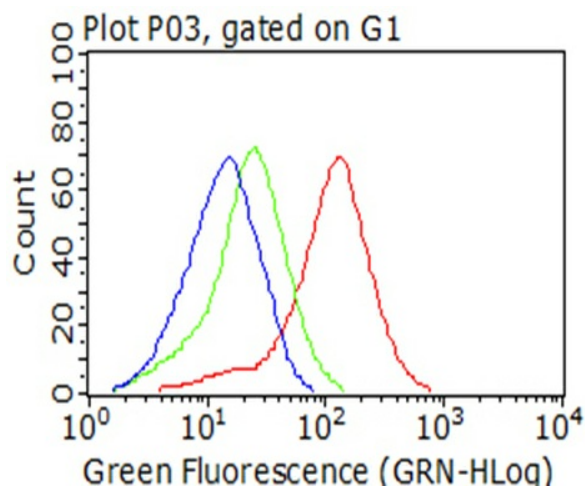
HEK293T cells were transfected with the pCMV6-ENTRY control (Left lane) or pCMV6-ENTRY IGF1R ([RC214928], Right lane) cDNA for 48 hrs and lysed. Equivalent amounts of cell lysates (5 ug per lane) were separated by SDS-PAGE and immunoblotted with anti-IGF1R (1:500). Positive lysates [LY400311] (100ug) and [LC400311] (20ug) can be purchased separately from OriGene.



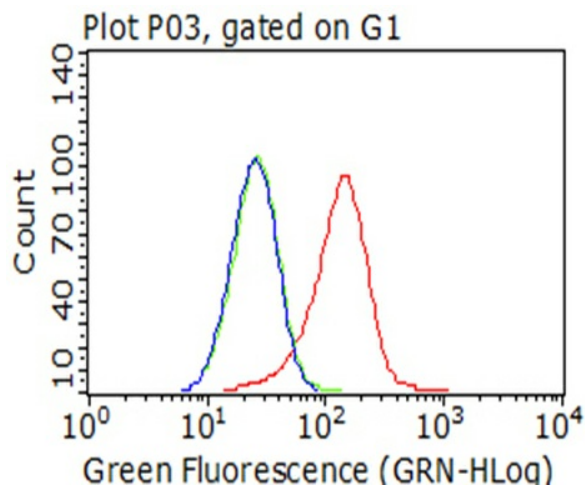
Western blot analysis of extracts (35ug) from 4 cell lines lysates by using anti-IGF1R monoclonal antibody (1:500).



Living HEK293T cells transfected with either [RC214928] overexpress plasmid (Red), compared to an IgG isotype control, (Green) or empty vector control plasmid (Blue) were immunostained by anti-IGF1R antibody ([TA807836]), and then analyzed by flow cytometry (1:100).



Flow cytometric analysis of living HepG2 cells, using anti-IGF1R antibody ([TA807836]), (red), compared to an IgG isotype control, (green), and negative control (PBS), (blue) (1:100).



Flow cytometric analysis of living A549 cells, using anti-IGF1R antibody ([TA807836]), (red), compared to an IgG isotype control, (green), and negative control (PBS), (blue) (1:100).