

## Product datasheet for **TA807834AM**

### BTG1 Mouse Monoclonal Antibody (Biotin conjugated) [Clone ID: OTI7H6]

#### Product data:

Product Type:	Primary Antibodies
Clone Name:	OTI7H6
Applications:	IHC
Recommended Dilution:	IHC 1:150
Reactivity:	Human, Mouse, Rat
Host:	Mouse
Isotype:	IgG1
Clonality:	Monoclonal
Immunogen:	Full length human recombinant protein of human BTG1 (NP_001722) produced in E.coli.
Formulation:	PBS (pH 7.3) containing 1% BSA, 50% glycerol and 0.02% sodium azide.
Concentration:	0.5 mg/ml
Purification:	Purified from mouse ascites fluids or tissue culture supernatant by affinity chromatography (protein A/G)
Conjugation:	Biotin
Storage:	Store at -20°C as received.
Stability:	Stable for 12 months from date of receipt.
Predicted Protein Size:	19 kDa
Gene Name:	B-cell translocation gene 1, anti-proliferative
Database Link:	<a href="#">NP_001722</a> <a href="#">Entrez Gene 12226 Mouse</a> <a href="#">Entrez Gene 29618 Rat</a> <a href="#">Entrez Gene 694 Human</a> <a href="#">P62324</a>
Background:	This gene is a member of an anti-proliferative gene family that regulates cell growth and differentiation. Expression of this gene is highest in the G0/G1 phases of the cell cycle and downregulated when cells progressed through G1. The encoded protein interacts with several nuclear receptors, and functions as a coactivator of cell differentiation. This locus has been shown to be involved in a t(8;12)(q24;q22) chromosomal translocation in a case of B-cell chronic lymphocytic leukemia. [provided by RefSeq, Oct 2008]

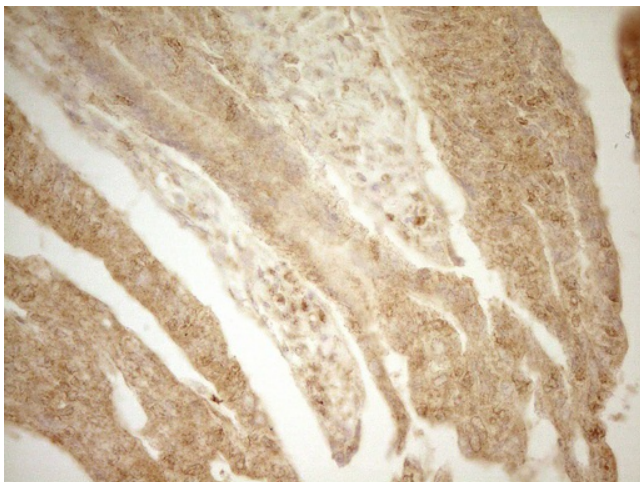


[View online »](#)

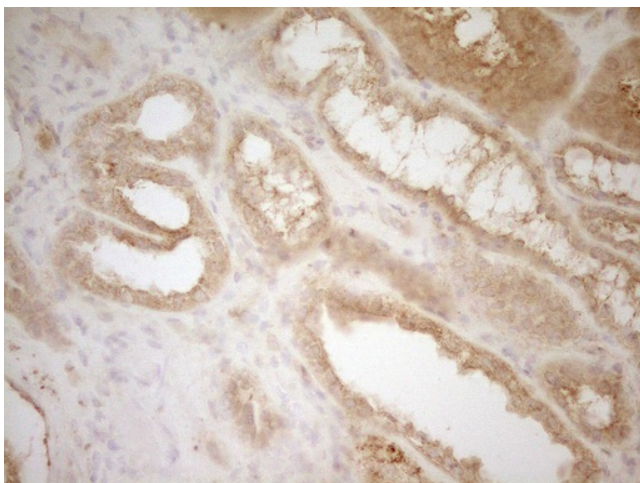
Synonyms: APRO2

Protein Families: Transcription Factors

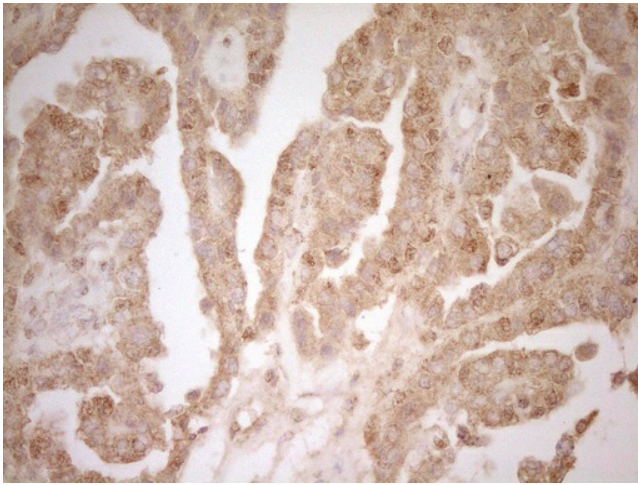
### Product images:



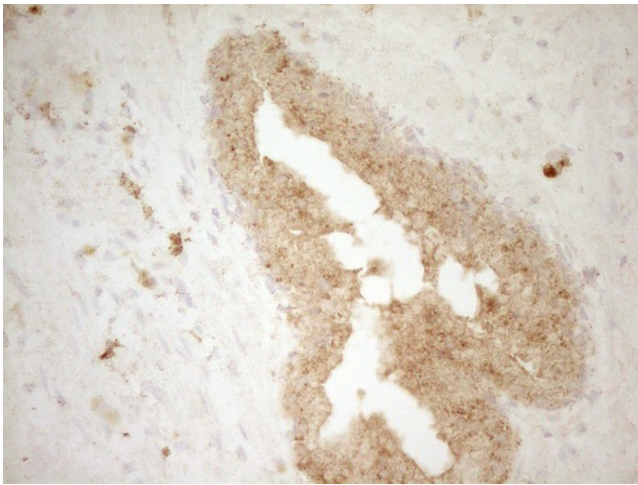
Immunohistochemical staining of paraffin-embedded Adenocarcinoma of Human colon tissue using anti-BTG1 mouse monoclonal antibody. (Heat-induced epitope retrieval by 1mM EDTA in 10mM Tris, pH8.5, 120°C for 3min, [TA807834])



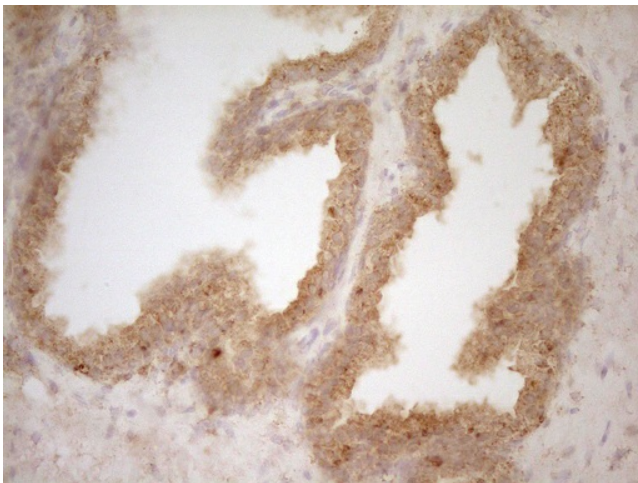
Immunohistochemical staining of paraffin-embedded Human Kidney tissue within the normal limits using anti-BTG1 mouse monoclonal antibody. (Heat-induced epitope retrieval by 1mM EDTA in 10mM Tris, pH8.5, 120°C for 3min, [TA807834])



Immunohistochemical staining of paraffin-embedded Adenocarcinoma of Human ovary tissue using anti-BTG1 mouse monoclonal antibody. (Heat-induced epitope retrieval by 1mM EDTA in 10mM Tris, pH8.5, 120°C for 3min, [TA807834])



Immunohistochemical staining of paraffin-embedded Adenocarcinoma of Human endometrium tissue using anti-BTG1 mouse monoclonal antibody. (Heat-induced epitope retrieval by 1mM EDTA in 10mM Tris, pH8.5, 120°C for 3min, [TA807834])



Immunohistochemical staining of paraffin-embedded Carcinoma of Human prostate tissue using anti-BTG1 mouse monoclonal antibody. (Heat-induced epitope retrieval by 1mM EDTA in 10mM Tris, pH8.5, 120°C for 3min, [TA807834])