

Product datasheet for **TA807830S**

EGFL7 Mouse Monoclonal Antibody [Clone ID: OTI2B5]

Product data:

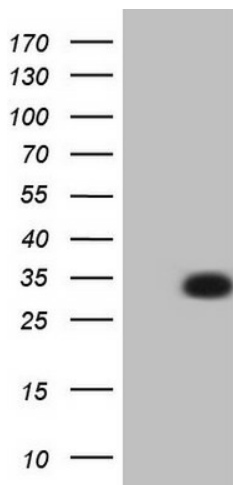
Product Type:	Primary Antibodies
Clone Name:	OTI2B5
Applications:	WB
Recommended Dilution:	WB 1:2000
Reactivity:	Human
Host:	Mouse
Isotype:	IgG1
Clonality:	Monoclonal
Immunogen:	Human recombinant protein fragment corresponding to amino acids 24-273 of human EGFL7(NP_057299) produced in E.coli.
Formulation:	PBS (pH 7.3) containing 1% BSA, 50% glycerol and 0.02% sodium azide.
Concentration:	1 mg/ml
Purification:	Purified from mouse ascites fluids or tissue culture supernatant by affinity chromatography (protein A/G)
Conjugation:	Unconjugated
Storage:	Store at -20°C as received.
Stability:	Stable for 12 months from date of receipt.
Predicted Protein Size:	29.4 kDa
Gene Name:	EGF like domain multiple 7
Database Link:	NP_057299 Entrez Gene 51162 Human Q9UHF1
Background:	This gene encodes a secreted endothelial cell protein that contains two epidermal growth factor-like domains. The encoded protein may play a role in regulating vasculogenesis. This protein may be involved in the growth and proliferation of tumor cells. Alternate splicing results in multiple transcript variants. [provided by RefSeq, Feb 2012]
Synonyms:	NEU1; VE-STATIN; ZNEU1



[View online »](#)

Protein Families: Secreted Protein

Product images:



HEK293T cells were transfected with the pCMV6-ENTRY control (Left lane) or pCMV6-ENTRY EGFL7 ([RC218849], Right lane) cDNA for 48 hrs and lysed. Equivalent amounts of cell lysates (5 ug per lane) were separated by SDS-PAGE and immunoblotted with anti-EGFL7 (1:2000). Positive lysates [LY402519] (100ug) and [LC402519] (20ug) can be purchased separately from OriGene.