

## Product datasheet for **TA807821AM**

### **TNF alpha (TNF) Mouse Monoclonal Antibody (Biotin conjugated) [Clone ID: OTI5A11]**

#### **Product data:**

<b>Product Type:</b>	Primary Antibodies
<b>Clone Name:</b>	OTI5A11
<b>Applications:</b>	IF, WB
<b>Recommended Dilution:</b>	WB 1:2000, IF 1:100
<b>Reactivity:</b>	Human
<b>Host:</b>	Mouse
<b>Isotype:</b>	IgG1
<b>Clonality:</b>	Monoclonal
<b>Immunogen:</b>	Full length human recombinant protein of human TNFA (NP_000585) produced in HEK293T cell.
<b>Formulation:</b>	PBS (pH 7.3) containing 1% BSA, 50% glycerol and 0.02% sodium azide.
<b>Concentration:</b>	0.5 mg/ml
<b>Purification:</b>	Purified from mouse ascites fluids or tissue culture supernatant by affinity chromatography (protein A/G)
<b>Conjugation:</b>	Biotin
<b>Storage:</b>	Store at -20°C as received.
<b>Stability:</b>	Stable for 12 months from date of receipt.
<b>Predicted Protein Size:</b>	25.5 kDa
<b>Gene Name:</b>	tumor necrosis factor
<b>Database Link:</b>	<a href="#">NP_000585</a> <a href="#">Entrez Gene 7124 Human</a> <a href="#">P01375</a>
<b>Synonyms:</b>	DIF; TNF-alpha; TNFA; TNFSF2
<b>Protein Families:</b>	Druggable Genome, Secreted Protein, Transcription Factors, Transmembrane

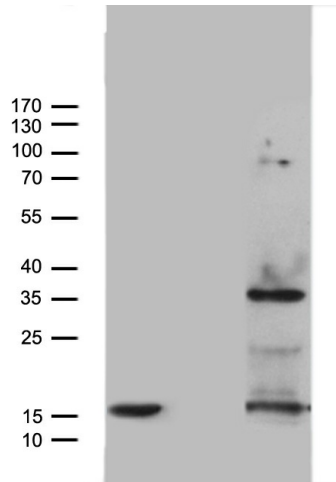


[View online »](#)

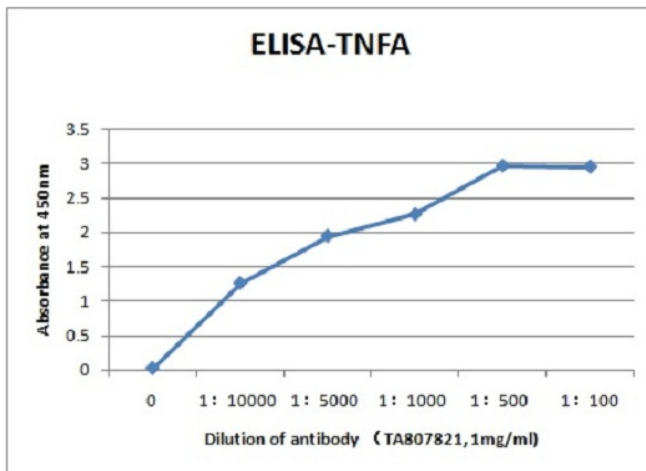
**Protein Pathways:**

Adipocytokine signaling pathway, Allograft rejection, Alzheimer's disease, Amyotrophic lateral sclerosis (ALS), Apoptosis, Asthma, Cytokine-cytokine receptor interaction, Dilated cardiomyopathy, Fc epsilon RI signaling pathway, Graft-versus-host disease, Hematopoietic cell lineage, Hypertrophic cardiomyopathy (HCM), MAPK signaling pathway, Natural killer cell mediated cytotoxicity, NOD-like receptor signaling pathway, RIG-I-like receptor signaling pathway, Systemic lupus erythematosus, T cell receptor signaling pathway, TGF-beta signaling pathway, Toll-like receptor signaling pathway, Type I diabetes mellitus, Type II diabetes mellitus

**Product images:**



HEK293T cells were transfected with the pCMV6-ENTRY control (middle lane) or pCMV6-ENTRY TNFA ([RC206983], Right lane) cDNA for 48 hrs and lysed. Equivalent amounts of cell lysates (5 ug per lane) and Origene recombinant TNFA protein [TP750007] (0.6ug, left lane) were separated by SDS-PAGE and immunoblotted with anti-TNFA (1:2000). Positive lysates [LY424626] (100ug) and [LC424626] (20ug) can be purchased separately from OriGene.



ELISA analysis of anti-TNFA antibody. 96-well plate was coated with Origene recombinant protein TNFa ([TP750007]) and primary antibody dilution ranges from 1:100 to 1:10000 ([TA807821], 1mg/ml).