

## Product datasheet for **TA807803S**

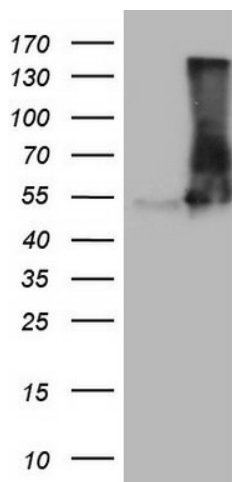
### VPS13B Mouse Monoclonal Antibody [Clone ID: OTI6D1]

#### Product data:

Product Type:	Primary Antibodies
Clone Name:	OTI6D1
Applications:	WB
Recommended Dilution:	WB 1:2000
Reactivity:	Human, Mouse, Rat
Host:	Mouse
Isotype:	IgG1
Clonality:	Monoclonal
Immunogen:	Human recombinant protein fragment corresponding to amino acids 91-346 of human VPS13B(NP_858047) produced in E.coli.
Formulation:	PBS (pH 7.3) containing 1% BSA, 50% glycerol and 0.02% sodium azide.
Concentration:	1 mg/ml
Purification:	Purified from mouse ascites fluids or tissue culture supernatant by affinity chromatography (protein A/G)
Conjugation:	Unconjugated
Storage:	Store at -20°C as received.
Stability:	Stable for 12 months from date of receipt.
Predicted Protein Size:	47 kDa
Gene Name:	vacuolar protein sorting 13 homolog B
Database Link:	<a href="#">NP_858047</a> <a href="#">Entrez Gene 315036 Rat</a> <a href="#">Entrez Gene 666173 Mouse</a> <a href="#">Entrez Gene 157680 Human</a> <a href="#">Q7Z7G8</a>
Synonyms:	CHS1; COH1



[View online »](#)

**Product images:**

HEK293T cells were transfected with the pCMV6-ENTRY control (Cat# [PS100001], Left lane) or pCMV6-ENTRY VPS13B (Cat# [RC219188], Right lane) cDNA for 48 hrs and lysed. Equivalent amounts of cell lysates (5 ug per lane) were separated by SDS-PAGE and immunoblotted with anti-VPS13B (Cat# [TA807803])(1:2000). Positive lysates [LY405555] (100ug) and [LC405555] (20ug) can be purchased separately from OriGene.