

## Product datasheet for **TA807789AM**

### Myostatin Propeptide (MSTN) Mouse Monoclonal Antibody (Biotin conjugated) [Clone ID: OTI4F9]

#### Product data:

|                         |   |
|-------------------------|---|
| Product Type:           | Primary Antibodies  |
| Clone Name:             | OTI4F9  |
| Applications:           | WB  |
| Recommended Dilution:   | WB 1:2000   |
| Reactivity:             | Human, Mouse, Rat   |
| Host:                   | Mouse   |
| Isotype:                | IgG2b   |
| Clonality:              | Monoclonal  |
| Immunogen:              | Human recombinant protein fragment corresponding to amino acids 24-266 of human MSTN(NP_005250) produced in E.coli.   |
| Formulation:            | PBS (pH 7.3) containing 1% BSA, 50% glycerol and 0.02% sodium azide.  |
| Concentration:          | 0.5 mg/ml   |
| Purification:           | Purified from mouse ascites fluids or tissue culture supernatant by affinity chromatography (protein A/G)   |
| Conjugation:            | Biotin  |
| Storage:                | Store at -20°C as received.   |
| Stability:              | Stable for 12 months from date of receipt.  |
| Predicted Protein Size: | 42.6 kDa  |
| Gene Name:              | myostatin   |
| Database Link:          | <a href="#">NP_005250</a><br><a href="#">Entrez Gene 17700 Mouse</a> <a href="#">Entrez Gene 29152 Rat</a> <a href="#">Entrez Gene 2660 Human</a><br><a href="#">O14793</a> |



[View online »](#)

**Background:**

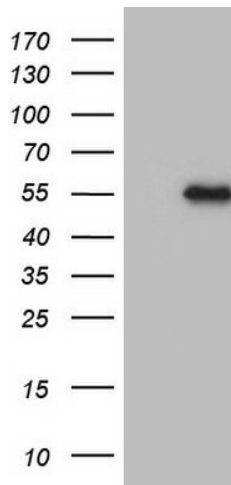
The protein encoded by this gene is a member of the bone morphogenetic protein (BMP) family and the TGF-beta superfamily. This group of proteins is characterized by a polybasic proteolytic processing site which is cleaved to produce a mature protein containing seven conserved cysteine residues. The members of this family are regulators of cell growth and differentiation in both embryonic and adult tissues. This gene is thought to encode a secreted protein which negatively regulates skeletal muscle growth. [provided by RefSeq, Jul 2008]

**Synonyms:**

GDF8; MSLHP

**Protein Families:**

Druggable Genome, Secreted Protein

**Product images:**

HEK293T cells were transfected with the pCMV6-ENTRY control (Left lane) or pCMV6-ENTRY MSTN ([RC210368], Right lane) cDNA for 48 hrs and lysed. Equivalent amounts of cell lysates (5 ug per lane) were separated by SDS-PAGE and immunoblotted with anti-MSTN (1:2000). Positive lysates [LY401622] (100ug) and [LC401622] (20ug) can be purchased separately from OriGene.