

Product datasheet for **TA807786**

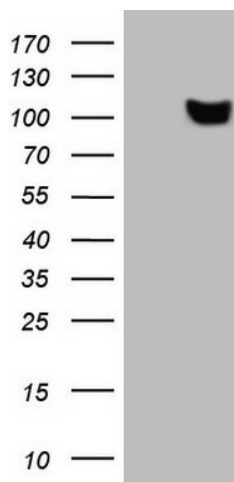
SCML2 Mouse Monoclonal Antibody [Clone ID: OTI1B1]

Product data:

Product Type:	Primary Antibodies
Clone Name:	OTI1B1
Applications:	WB
Recommended Dilution:	WB 1:2000
Reactivity:	Human
Host:	Mouse
Isotype:	IgG2b
Clonality:	Monoclonal
Immunogen:	Human recombinant protein fragment corresponding to amino acids 1-321 of human SCML2(NP_006080) produced in E.coli.
Formulation:	PBS (pH 7.3) containing 1% BSA, 50% glycerol and 0.02% sodium azide.
Concentration:	1 mg/ml
Purification:	Purified from mouse ascites fluids or tissue culture supernatant by affinity chromatography (protein A/G)
Conjugation:	Unconjugated
Storage:	Store at -20°C as received.
Stability:	Stable for 12 months from date of receipt.
Predicted Protein Size:	77.1 kDa
Gene Name:	sex comb on midleg-like 2 (Drosophila)
Database Link:	NP_006080 Entrez Gene 10389 Human Q9UQR0
Protein Families:	Transcription Factors



[View online »](#)

Product images:

HEK293T cells were transfected with the pCMV6-ENTRY control (Left lane) or pCMV6-ENTRY SCML2 ([RC209060], Right lane) cDNA for 48 hrs and lysed. Equivalent amounts of cell lysates (5 ug per lane) were separated by SDS-PAGE and immunoblotted with anti-SCML2 (1:2000). Positive lysates [LY416870] (100ug) and [LC416870] (20ug) can be purchased separately from OriGene.