

Product datasheet for **TA807784AM**

Aminomethyltransferase (AMT) Mouse Monoclonal Antibody (Biotin conjugated) [Clone ID: OTI6F4]

Product data:

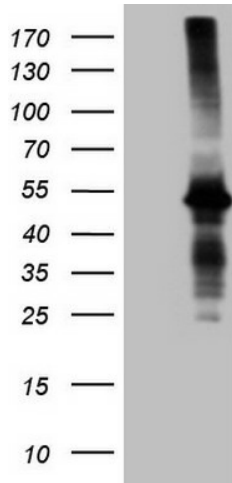
Product Type:	Primary Antibodies
Clone Name:	OTI6F4
Applications:	IHC, WB
Recommended Dilution:	WB 1:2000, IHC 1:150
Reactivity:	Human, Mouse, Rat
Host:	Mouse
Isotype:	IgG1
Clonality:	Monoclonal
Immunogen:	Human recombinant protein fragment corresponding to amino acids 146-403 of human AMT(NP_000472) produced in E.coli.
Formulation:	PBS (pH 7.3) containing 1% BSA, 50% glycerol and 0.02% sodium azide.
Concentration:	0.5 mg/ml
Purification:	Purified from mouse ascites fluids or tissue culture supernatant by affinity chromatography (protein A/G)
Conjugation:	Biotin
Storage:	Store at -20°C as received.
Stability:	Stable for 12 months from date of receipt.
Predicted Protein Size:	43.8 kDa
Gene Name:	aminomethyltransferase
Database Link:	NP_000472 Entrez Gene 306586 Rat Entrez Gene 434437 Mouse Entrez Gene 275 Human P48728
Background:	This gene encodes one of four critical components of the glycine cleavage system. Mutations in this gene have been associated with glycine encephalopathy. Multiple transcript variants encoding different isoforms have been found for this gene. [provided by RefSeq, Sep 2011]
Synonyms:	GCE; GCST; GCVT; NKH



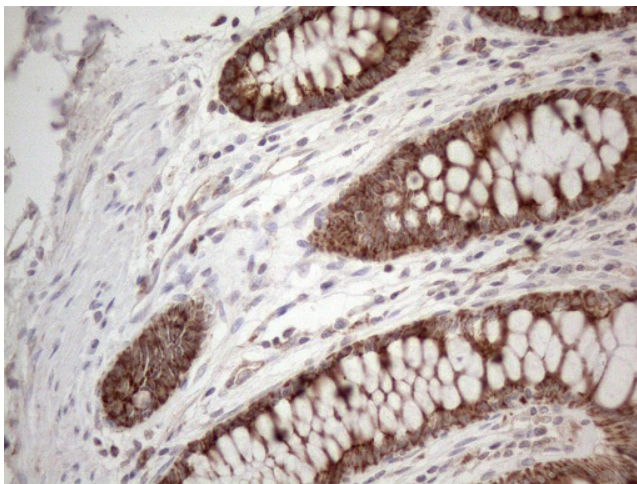
[View online »](#)

Protein Pathways: Glycine, serine and threonine metabolism, Metabolic pathways, Nitrogen metabolism, One carbon pool by folate

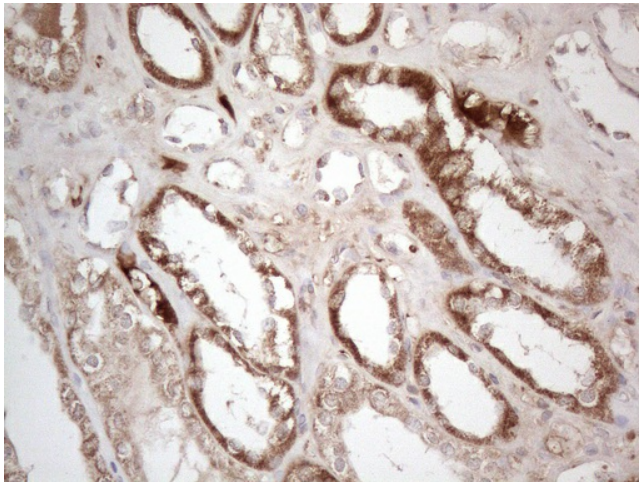
Product images:



HEK293T cells were transfected with the pCMV6-ENTRY control (Cat# [PS100001], Left lane) or pCMV6-ENTRY AMT (Cat# [RC214343], Right lane) cDNA for 48 hrs and lysed. Equivalent amounts of cell lysates (5 ug per lane) were separated by SDS-PAGE and immunoblotted with anti-AMT (Cat# [TA807784])(1:2000). Positive lysates [LY424691] (100ug) and [LC424691] (20ug) can be purchased separately from OriGene.



Immunohistochemical staining of paraffin-embedded Human colon tissue within the normal limits using anti-AMT mouse monoclonal antibody. (Heat-induced epitope retrieval by 1mM EDTA in 10mM Tris buffer (pH8.5) at 120°C for 3min, [TA807784]) (1:150)



Immunohistochemical staining of paraffin-embedded Human Kidney tissue within the normal limits using anti-AMT mouse monoclonal antibody. (Heat-induced epitope retrieval by 1mM EDTA in 10mM Tris buffer (pH8.5) at 120°C for 3min, [TA807784]) (1:150)