

## Product datasheet for **TA807773**

### EIF4EBP3 Mouse Monoclonal Antibody [Clone ID: OTI3B9]

#### Product data:

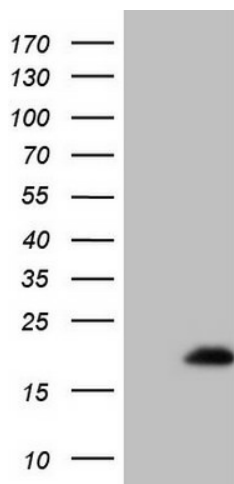
Product Type:	Primary Antibodies
Clone Name:	OTI3B9
Applications:	WB
Recommended Dilution:	WB 1:2000
Reactivity:	Human
Host:	Mouse
Isotype:	IgG1
Clonality:	Monoclonal
Immunogen:	Full length human recombinant protein of human EIF4EBP3 (NP_003723) produced in E.coli.
Formulation:	PBS (pH 7.3) containing 1% BSA, 50% glycerol and 0.02% sodium azide.
Concentration:	1 mg/ml
Purification:	Purified from mouse ascites fluids or tissue culture supernatant by affinity chromatography (protein A/G)
Conjugation:	Unconjugated
Storage:	Store at -20°C as received.
Stability:	Stable for 12 months from date of receipt.
Predicted Protein Size:	10.7 kDa
Gene Name:	eukaryotic translation initiation factor 4E binding protein 3
Database Link:	<a href="#">NP_003723</a> <a href="#">Entrez Gene 8637 Human</a> <a href="#">O60516</a>
Background:	This gene encodes a member of the EIF4EBP family, which consists of proteins that bind to eukaryotic translation initiation factor 4E and regulate its assembly into EIF4F, the multi-subunit translation initiation factor that recognizes the mRNA cap structure. Read-through transcription from the neighboring upstream gene (MASK or ANKHD1) generates a transcript (MASK-BP3) that encodes a protein comprised of the MASK protein sequence for the majority of the protein and a different C-terminus due to an alternate reading frame for the EIF4EBP3 segments. [provided by RefSeq, Oct 2010]



[View online »](#)

Synonyms: 4E-BP3; 4EBP3

### Product images:



HEK293T cells were transfected with the pCMV6-ENTRY control (Cat# [PS100001], Left lane) or pCMV6-ENTRY EIF4EBP3 (Cat# [RC210053], Right lane) cDNA for 48 hrs and lysed. Equivalent amounts of cell lysates (5 ug per lane) were separated by SDS-PAGE and immunoblotted with anti-EIF4EBP3 (Cat# TA807773)(1:2000). Positive lysates [LY418472] (100ug) and [LC418472] (20ug) can be purchased separately from OriGene.