

## Product datasheet for **TA807763BM**

### **N Cadherin (CDH2) Mouse Monoclonal Antibody (HRP conjugated) [Clone ID: OTI6E5]**

#### **Product data:**

<b>Product Type:</b>	Primary Antibodies
<b>Clone Name:</b>	OTI6E5
<b>Applications:</b>	WB
<b>Recommended Dilution:</b>	WB 1:2000
<b>Reactivity:</b>	Human, Mouse, Rat
<b>Host:</b>	Mouse
<b>Isotype:</b>	IgG1
<b>Clonality:</b>	Monoclonal
<b>Immunogen:</b>	Synthetic peptide (the amino acid sequence is considered to be commercially sensitive) within Human CDH2 (NP_001783). The exact sequence is proprietary.
<b>Formulation:</b>	PBS (pH 7.3) containing 1% BSA, 50% glycerol.
<b>Concentration:</b>	0.5 mg/ml
<b>Purification:</b>	Purified from mouse ascites fluids or tissue culture supernatant by affinity chromatography (protein A/G)
<b>Conjugation:</b>	HRP
<b>Storage:</b>	Store at -20°C as received.
<b>Stability:</b>	Stable for 12 months from date of receipt.
<b>Predicted Protein Size:</b>	97.2 kDa
<b>Gene Name:</b>	cadherin 2
<b>Database Link:</b>	<a href="#">NP_001783</a> <a href="#">Entrez Gene 12558 Mouse</a> <a href="#">Entrez Gene 83501 Rat</a> <a href="#">Entrez Gene 1000 Human</a> <a href="#">P19022</a>
<b>Background:</b>	This gene is a classical cadherin from the cadherin superfamily. The encoded protein is a calcium dependent cell-cell adhesion glycoprotein comprised of five extracellular cadherin repeats, a transmembrane region and a highly conserved cytoplasmic tail. The protein functions during gastrulation and is required for establishment of left-right asymmetry. At certain central nervous system synapses, presynaptic to postsynaptic adhesion is mediated at least in part by this gene product. [provided by RefSeq, Jul 2008]



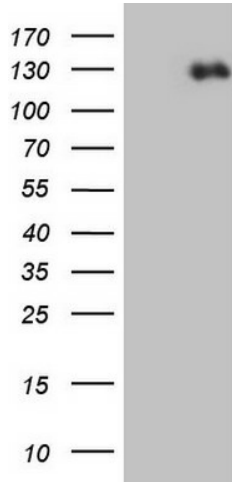
[View online »](#)

**Synonyms:** CD325; CDHN; CDw325; NCAD

**Protein Families:** Druggable Genome, ES Cell Differentiation/IPS, Transmembrane

**Protein Pathways:** Arrhythmogenic right ventricular cardiomyopathy (ARVC), Cell adhesion molecules (CAMs)

**Product images:**



HEK293T cells were transfected with the pCMV6-ENTRY control (Left lane) or pCMV6-ENTRY CDH2 ([RC207170], Right lane) cDNA for 48 hrs and lysed. Equivalent amounts of cell lysates (5 ug per lane) were separated by SDS-PAGE and immunoblotted with anti-CDH2 (1:2000). Positive lysates [LY419743] (100ug) and [LC419743] (20ug) can be purchased separately from OriGene.