

## Product datasheet for **TA807759M**

### **BAMBI Mouse Monoclonal Antibody [Clone ID: OTI5D5]**

#### **Product data:**

Product Type:	Primary Antibodies
Clone Name:	OTI5D5
Applications:	WB
Recommended Dilution:	WB 1:200
Reactivity:	Human, Mouse, Rat
Host:	Mouse
Isotype:	IgG1
Clonality:	Monoclonal
Immunogen:	Human recombinant protein fragment corresponding to amino acids 21-152 of human BAMBI(NP_036474) produced in E.coli.
Formulation:	PBS (pH 7.3) containing 1% BSA, 50% glycerol and 0.02% sodium azide.
Concentration:	1 mg/ml
Purification:	Purified from mouse ascites fluids or tissue culture supernatant by affinity chromatography (protein A/G)
Conjugation:	Unconjugated
Storage:	Store at -20°C as received.
Stability:	Stable for 12 months from date of receipt.
Predicted Protein Size:	26.6 kDa
Gene Name:	BMP and activin membrane-bound inhibitor
Database Link:	<a href="#">NP_036474</a> <a href="#">Entrez Gene 68010 Mouse</a> <a href="#">Entrez Gene 83837 Rat</a> <a href="#">Entrez Gene 25805 Human</a> <a href="#">Q13145</a>



[View online »](#)

**Background:**

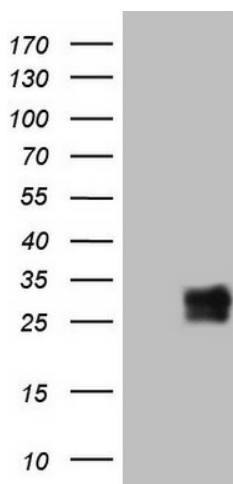
This gene encodes a transmembrane glycoprotein related to the type I receptors of the transforming growth factor-beta (TGF-beta) family, whose members play important roles in signal transduction in many developmental and pathological processes. The encoded protein however is a pseudoreceptor, lacking an intracellular serine/threonine kinase domain required for signaling. Similar proteins in frog, mouse and zebrafish function as negative regulators of TGF-beta, which has led to the suggestion that the encoded protein may function to limit the signaling range of the TGF-beta family during early embryogenesis. [provided by RefSeq, Jul 2008]

**Synonyms:**

NMA

**Protein Families:**

Transmembrane

**Product images:**


HEK293T cells were transfected with the pCMV6-ENTRY control (Cat# [PS100001], Left lane) or pCMV6-ENTRY BAMBI (Cat# [RC200195], Right lane) cDNA for 48 hrs and lysed. Equivalent amounts of cell lysates (5 ug per lane) were separated by SDS-PAGE and immunoblotted with anti-BAMBI (Cat# [TA807759])(1:2000). Positive lysates [LY415799] (100ug) and [LC415799] (20ug) can be purchased separately from OriGene.