

Product datasheet for **TA807758M**

POLR2F Mouse Monoclonal Antibody [Clone ID: OTI2F2]

Product data:

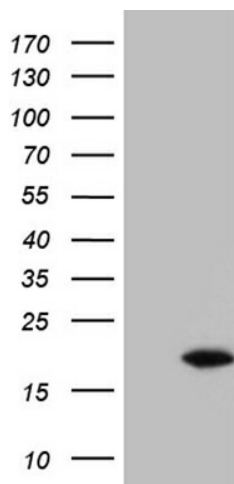
| | |
|-------------------------|--|
| Product Type: | Primary Antibodies |
| Clone Name: | OTI2F2 |
| Applications: | WB |
| Recommended Dilution: | WB 1:2000 |
| Reactivity: | Human, Mouse, Rat |
| Host: | Mouse |
| Isotype: | IgG1 |
| Clonality: | Monoclonal |
| Immunogen: | Full length human recombinant protein of human POLR2F (NP_068809) produced in E.coli. |
| Formulation: | PBS (pH 7.3) containing 1% BSA, 50% glycerol and 0.02% sodium azide. |
| Concentration: | 1 mg/ml |
| Purification: | Purified from mouse ascites fluids or tissue culture supernatant by affinity chromatography (protein A/G) |
| Conjugation: | Unconjugated |
| Storage: | Store at -20°C as received. |
| Stability: | Stable for 12 months from date of receipt. |
| Predicted Protein Size: | 14.3 kDa |
| Gene Name: | polymerase (RNA) II subunit F |
| Database Link: | NP_068809 Entrez Gene 5435 Human P61218 |
| Background: | This gene encodes the sixth largest subunit of RNA polymerase II, the polymerase responsible for synthesizing messenger RNA in eukaryotes. In yeast, this polymerase subunit, in combination with at least two other subunits, forms a structure that stabilizes the transcribing polymerase on the DNA template. Alternative splicing results in multiple transcript variants. [provided by RefSeq, Jul 2014] |
| Synonyms: | HRBP14.4; POLRF; RPABC2; RPABC14.4; RPB6; RPB14.4; RPC15 |


[View online »](#)

Protein Families: Transcription Factors

Protein Pathways: Huntington's disease, Metabolic pathways, Purine metabolism, Pyrimidine metabolism, RNA polymerase

Product images:



HEK293T cells were transfected with the pCMV6-ENTRY control (Cat# [PS100001], Left lane) or pCMV6-ENTRY POLR2F (Cat# [RC200855], Right lane) cDNA for 48 hrs and lysed. Equivalent amounts of cell lysates (5 ug per lane) were separated by SDS-PAGE and immunoblotted with anti-POLR2F (1:2000) (Cat# [TA807758]). Positive lysates [LY411849] (100ug) and [LC411849] (20ug) can be purchased separately from OriGene.