

## Product datasheet for **TA807741S**

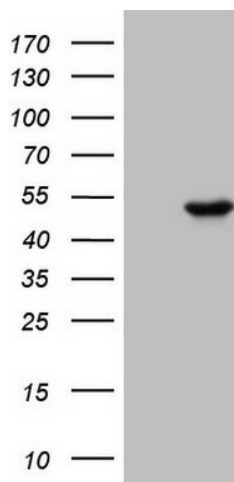
### Pellino 1 (PELI1) Mouse Monoclonal Antibody [Clone ID: OTI10D1]

#### Product data:

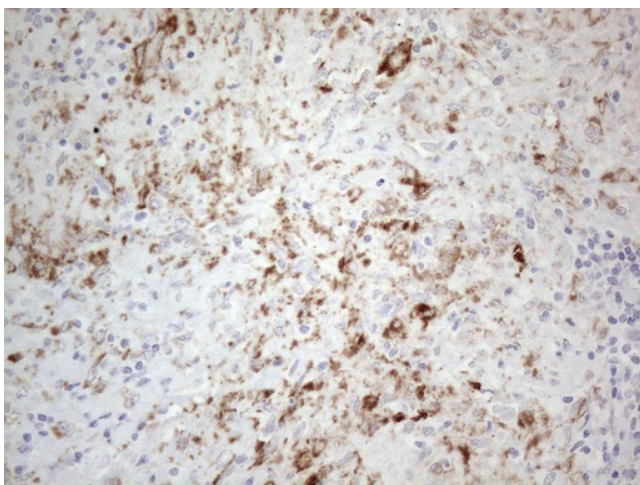
Product Type:	Primary Antibodies
Clone Name:	OTI10D1
Applications:	IHC, WB
Recommended Dilution:	WB 1:2000, IHC 1:150
Reactivity:	Human, Mouse, Rat
Host:	Mouse
Isotype:	IgG1
Clonality:	Monoclonal
Immunogen:	Human recombinant protein fragment corresponding to amino acids 1-245 of human PELI1(NP_065702) produced in E.coli.
Formulation:	PBS (pH 7.3) containing 1% BSA, 50% glycerol and 0.02% sodium azide.
Concentration:	1 mg/ml
Purification:	Purified from mouse ascites fluids or tissue culture supernatant by affinity chromatography (protein A/G)
Conjugation:	Unconjugated
Storage:	Store at -20°C as received.
Stability:	Stable for 12 months from date of receipt.
Predicted Protein Size:	46.1 kDa
Gene Name:	pellino E3 ubiquitin protein ligase 1
Database Link:	<a href="#">NP_065702</a> <a href="#">Entrez Gene 67245 Mouse</a> <a href="#">Entrez Gene 305549 Rat</a> <a href="#">Entrez Gene 57162 Human</a> <a href="#">Q96FA3</a>
Synonyms:	DKFZp686C18116; MGC50990



[View online »](#)

**Product images:**

HEK293T cells were transfected with the pCMV6-ENTRY control (Left lane) or pCMV6-ENTRY PELI1 ([RC208197], Right lane) cDNA for 48 hrs and lysed. Equivalent amounts of cell lysates (5 ug per lane) were separated by SDS-PAGE and immunoblotted with anti-PELI1 (1:2000). Positive lysates [LY412313] (100ug) and [LC412313] (20ug) can be purchased separately from OriGene.



Immunohistochemical staining of paraffin-embedded Human lymph node tissue within the normal limits using anti-PELI1 mouse monoclonal antibody. (Heat-induced epitope retrieval by 1mM EDTA in 10mM Tris buffer (pH8.5) at 120°C for 3min, [TA807741]) (1:150)