

Product datasheet for **TA807708**

TCEAL1 Mouse Monoclonal Antibody [Clone ID: OTI2A1]

Product data:

Product Type:	Primary Antibodies
Clone Name:	OTI2A1
Applications:	WB
Recommended Dilution:	WB 1:2000
Reactivity:	Human
Host:	Mouse
Isotype:	IgG2a
Clonality:	Monoclonal
Immunogen:	Full length human recombinant protein of human TCEAL1 (NP_004771) produced in E.coli.
Formulation:	PBS (pH 7.3) containing 1% BSA, 50% glycerol and 0.02% sodium azide.
Concentration:	1 mg/ml
Purification:	Purified from mouse ascites fluids or tissue culture supernatant by affinity chromatography (protein A/G)
Conjugation:	Unconjugated
Storage:	Store at -20°C as received.
Stability:	Stable for 12 months from date of receipt.
Predicted Protein Size:	18.5 kDa
Gene Name:	transcription elongation factor A like 1
Database Link:	NP_004771 Entrez Gene 9338 Human Q15170



[View online »](#)

Background:

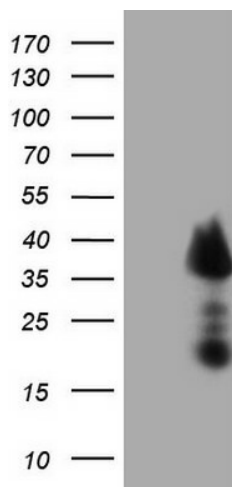
This gene encodes a member of the transcription elongation factor A (SII)-like (TCEAL) gene family. Members of this family may function as nuclear phosphoproteins that modulate transcription in a promoter context-dependent manner. The encoded protein is similar to transcription elongation factor A/transcription factor SII and contains a zinc finger-like motif as well as a sequence related to the transcription factor SII Pol II-binding region. It may exert its effects via protein-protein interactions with other transcriptional regulators rather than via direct binding of DNA. Multiple family members are located on the X chromosome. Alternative splicing results in multiple transcript variants encoding a single isoform. [provided by RefSeq, Jul 2008]

Synonyms:

p21; pp21; SIIR; WEX9

Protein Families:

Transcription Factors

Product images:

HEK293T cells were transfected with the pCMV6-ENTRY control (Left lane) or pCMV6-ENTRY TCEAL1 ([RC219873], Right lane) cDNA for 48 hrs and lysed. Equivalent amounts of cell lysates (5 ug per lane) were separated by SDS-PAGE and immunoblotted with anti-TCEAL1 (1:2000). Positive lysates [LY417752] (100ug) and [LC417752] (20ug) can be purchased separately from OriGene.