

## Product datasheet for **TA807705AM**

### **CGK2 (PRKG2) Mouse Monoclonal Antibody (Biotin conjugated) [Clone ID: OTI10D5]**

#### **Product data:**

|                                |   |
|--------------------------------|---|
| <b>Product Type:</b>           | Primary Antibodies  |
| <b>Clone Name:</b>             | OTI10D5   |
| <b>Applications:</b>           | WB  |
| <b>Recommended Dilution:</b>   | WB 1:500  |
| <b>Reactivity:</b>             | Human, Mouse, Rat   |
| <b>Host:</b>                   | Mouse   |
| <b>Isotype:</b>                | IgG1  |
| <b>Clonality:</b>              | Monoclonal  |
| <b>Immunogen:</b>              | Human recombinant protein fragment corresponding to amino acids 40-320 of human PRKG2(NP_006250 produced in E.coli.   |
| <b>Formulation:</b>            | PBS (pH 7.3) containing 1% BSA, 50% glycerol and 0.02% sodium azide.  |
| <b>Concentration:</b>          | 0.5 mg/ml   |
| <b>Purification:</b>           | Purified from mouse ascites fluids or tissue culture supernatant by affinity chromatography (protein A/G)   |
| <b>Conjugation:</b>            | Biotin  |
| <b>Storage:</b>                | Store at -20°C as received.   |
| <b>Stability:</b>              | Stable for 12 months from date of receipt.  |
| <b>Predicted Protein Size:</b> | 87.3 kDa  |
| <b>Gene Name:</b>              | protein kinase, cGMP-dependent, type II   |
| <b>Database Link:</b>          | <a href="#">NP_006250</a><br><a href="#">Entrez Gene 19092 Mouse</a> <a href="#">Entrez Gene 25523 Rat</a> <a href="#">Entrez Gene 5593 Human</a><br><a href="#">Q13237</a>   |
| <b>Background:</b>             | This gene encodes a protein that belongs to the serine/threonine protein kinase family of proteins. The encoded protein plays a role in the regulation of fluid balance in the intestine. A similar protein in mouse is thought to regulate differentiation and proliferation of cells in the colon. Alternate splicing results in multiple transcript variants. [provided by RefSeq, Sep 2013] |
| <b>Synonyms:</b>               | cGK2; cGKII; PRKGR2   |

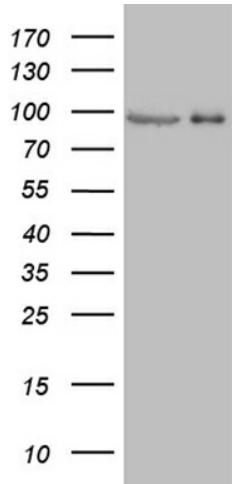


[View online »](#)

**Protein Families:** Druggable Genome, Protein Kinase

**Protein Pathways:** Gap junction, Long-term depression, Olfactory transduction

**Product images:**



HEK293T cells were transfected with the pCMV6-ENTRY control (Cat# [PS100001], Left lane) or pCMV6-ENTRY PRKG2 (Cat# [RC215879], Right lane) cDNA for 48 hrs and lysed. Equivalent amounts of cell lysates (5 ug per lane) were separated by SDS-PAGE and immunoblotted with anti-PRKG2 (Cat# [TA807705])(1:500). Positive lysates [LY401884] (100ug) and [LC401884] (20ug) can be purchased separately from OriGene.