

Product datasheet for **TA807703BM**

LIME (LIME1) Mouse Monoclonal Antibody (HRP conjugated) [Clone ID: OTI5D3]

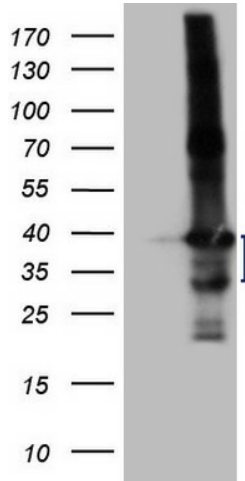
Product data:

Product Type:	Primary Antibodies
Clone Name:	OTI5D3
Applications:	IHC, WB
Recommended Dilution:	WB 1:2000, IHC 1:150
Reactivity:	Human
Host:	Mouse
Isotype:	IgG1
Clonality:	Monoclonal
Immunogen:	Human recombinant protein fragment corresponding to amino acids 30-295 of human LIME1(NP_060276) produced in E.coli.
Formulation:	PBS (pH 7.3) containing 1% BSA, 50% glycerol.
Concentration:	0.5 mg/ml
Purification:	Purified from mouse ascites fluids or tissue culture supernatant by affinity chromatography (protein A/G)
Conjugation:	HRP
Storage:	Store at -20°C as received.
Stability:	Stable for 12 months from date of receipt.
Predicted Protein Size:	31.1 kDa
Gene Name:	Lck interacting transmembrane adaptor 1
Database Link:	NP_060276 Entrez Gene 54923 Human Q9H400
Background:	LIME1 is a raft-associated transmembrane adaptor phosphoprotein that is preferentially expressed in hemopoietic cells, particularly T cells (Brdickova et al., 2003 [PubMed 14610046]; Hur et al., 2003 [PubMed 14610044]). [supplied by OMIM, Mar 2008]
Synonyms:	dj583P15.4; LIME
Protein Families:	Transmembrane

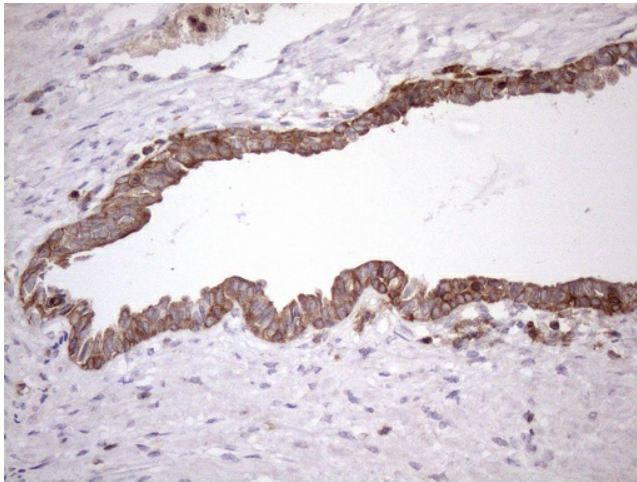


[View online »](#)

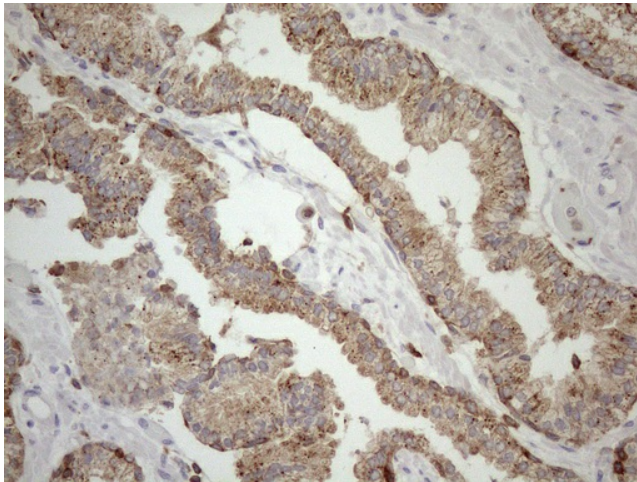
Product images:



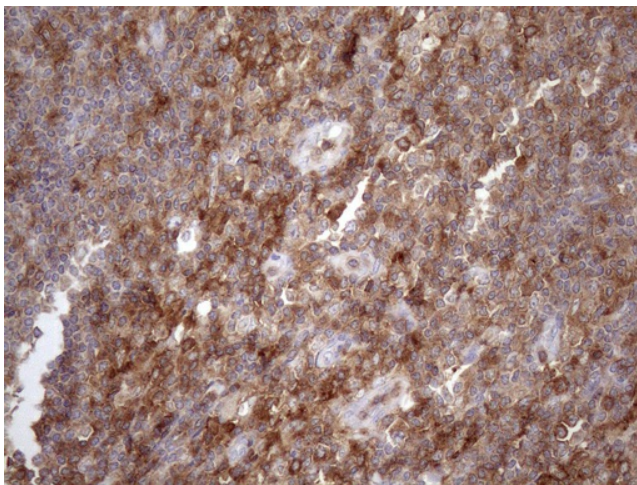
HEK293T cells were transfected with the pCMV6-ENTRY control (Cat# [PS100001], Left lane) or pCMV6-ENTRY LIME1 (Cat# [RC201909], Right lane) cDNA for 48 hrs and lysed. Equivalent amounts of cell lysates (5 ug per lane) were separated by SDS-PAGE and immunoblotted with anti-LIME1 (Cat# [TA807703])(1:2000). Positive lysates [LY413516] (100ug) and [LC413516] (20ug) can be purchased separately from OriGene.



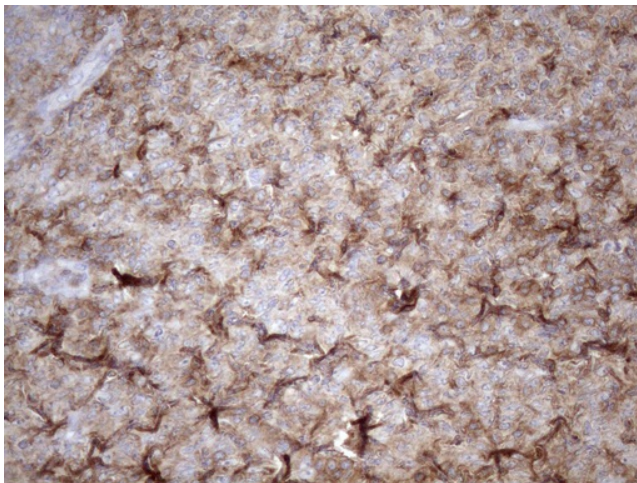
Immunohistochemical staining of paraffin-embedded Human prostate tissue within the normal limits using anti-LIME1 mouse monoclonal antibody. (Heat-induced epitope retrieval by 1mM EDTA in 10mM Tris buffer (pH8.5) at 120°C for 3min, [TA807703]) (1:150)



Immunohistochemical staining of paraffin-embedded Carcinoma of Human prostate tissue using anti-LIME1 mouse monoclonal antibody. (Heat-induced epitope retrieval by 1mM EDTA in 10mM Tris buffer (pH8.5) at 120°C for 3min, [TA807703]) (1:150)



Immunohistochemical staining of paraffin-embedded Human lymph node tissue within the normal limits using anti-LIME1 mouse monoclonal antibody. (Heat-induced epitope retrieval by 1mM EDTA in 10mM Tris buffer (pH8.5) at 120°C for 3min, [TA807703]) (1:150)



Immunohistochemical staining of paraffin-embedded Human lymphoma tissue using anti-LIME1 mouse monoclonal antibody. (Heat-induced epitope retrieval by 1mM EDTA in 10mM Tris buffer (pH8.5) at 120°C for 3min, [TA807703]) (1:150)