

Product datasheet for **TA807700S**

FOXC2 Mouse Monoclonal Antibody [Clone ID: OTI3E3]

Product data:

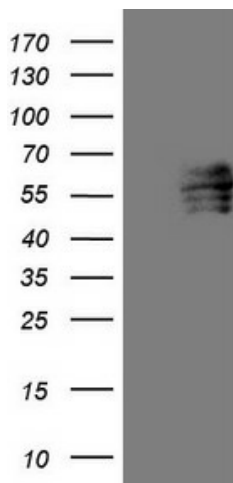
Product Type:	Primary Antibodies
Clone Name:	OTI3E3
Applications:	WB
Recommended Dilution:	WB 1:500
Reactivity:	Human, Mouse, Rat
Host:	Mouse
Isotype:	IgG1
Clonality:	Monoclonal
Immunogen:	Human recombinant protein fragment corresponding to amino acids 1-280 of human FOXC2(NP_005242) produced in E.coli.
Formulation:	PBS (pH 7.3) containing 1% BSA, 50% glycerol and 0.02% sodium azide.
Concentration:	1 mg/ml
Purification:	Purified from mouse ascites fluids or tissue culture supernatant by affinity chromatography (protein A/G)
Conjugation:	Unconjugated
Storage:	Store at -20°C as received.
Stability:	Stable for 12 months from date of receipt.
Predicted Protein Size:	53.5 kDa
Gene Name:	forkhead box C2
Database Link:	NP_005242 Entrez Gene 14234 Mouse Entrez Gene 171356 Rat Entrez Gene 2303 Human Q99958
Background:	This gene belongs to the forkhead family of transcription factors which is characterized by a distinct DNA-binding forkhead domain. The specific function of this gene has not yet been determined; however, it may play a role in the development of mesenchymal tissues. [provided by RefSeq, Jul 2008]
Synonyms:	FKHL14; LD; MFH-1; MFH1



[View online »](#)

Protein Families: Druggable Genome, Transcription Factors

Product images:



HEK293T cells were transfected with the pCMV6-ENTRY control (Cat# [PS100001], Left lane) or pCMV6-ENTRY FOXC2 (Cat# [RC223412], Right lane) cDNA for 48 hrs and lysed. Equivalent amounts of cell lysates (5 ug per lane) were separated by SDS-PAGE and immunoblotted with anti-FOXC2 (Cat# [TA807700])(1:500). Positive lysates [LY401613] (100ug) and [LC401613] (20ug) can be purchased separately from OriGene.