

## Product datasheet for **TA807663**

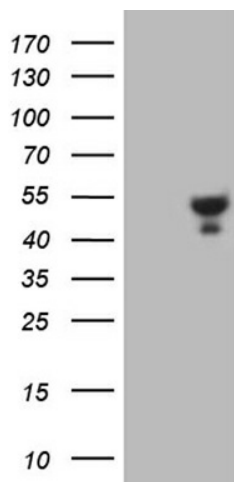
### **KCTD9 Mouse Monoclonal Antibody [Clone ID: OTI5F11]**

#### **Product data:**

Product Type:	Primary Antibodies
Clone Name:	OTI5F11
Applications:	WB
Recommended Dilution:	WB 1:500
Reactivity:	Human, Mouse, Rat
Host:	Mouse
Isotype:	IgG1
Clonality:	Monoclonal
Immunogen:	Human recombinant protein fragment corresponding to amino acids 1-223 of human KCTD9 (NP_060104) produced in E.coli.
Formulation:	PBS (pH 7.3) containing 1% BSA, 50% glycerol and 0.02% sodium azide.
Concentration:	1 mg/ml
Purification:	Purified from mouse ascites fluids or tissue culture supernatant by affinity chromatography (protein A/G)
Conjugation:	Unconjugated
Storage:	Store at -20°C as received.
Stability:	Stable for 12 months from date of receipt.
Predicted Protein Size:	42.4 kDa
Gene Name:	potassium channel tetramerization domain containing 9
Database Link:	<a href="#">NP_060104</a> <a href="#">Entrez Gene 105440</a> <a href="#">MouseEntrez Gene 364410</a> <a href="#">RatEntrez Gene 54793</a> <a href="#">Human Q7L273</a>
Synonyms:	BTBD27



[View online »](#)

**Product images:**

HEK293T cells were transfected with the pCMV6-ENTRY control (Left lane) or pCMV6-ENTRY KCTD9 ([RC209801], Right lane) cDNA for 48 hrs and lysed. Equivalent amounts of cell lysates (5 ug per lane) were separated by SDS-PAGE and immunoblotted with anti-KCTD9 (1:500). Positive lysates [LY402603] (100ug) and [LC402603] (20ug) can be purchased separately from OriGene.