

## Product datasheet for **TA807655M**

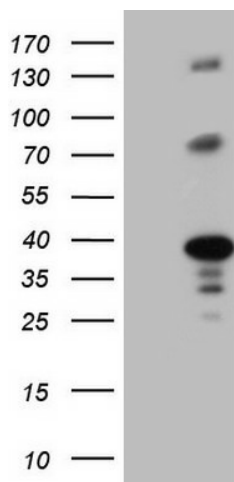
### **LIME (LIME1) Mouse Monoclonal Antibody [Clone ID: OTI9E9]**

#### **Product data:**

Product Type:	Primary Antibodies
Clone Name:	OTI9E9
Applications:	WB
Recommended Dilution:	WB 1:2000
Reactivity:	Human
Host:	Mouse
Isotype:	IgG1
Clonality:	Monoclonal
Immunogen:	Human recombinant protein fragment corresponding to amino acids 30-295 of human LIME1(NP_060276) produced in E.coli.
Formulation:	PBS (pH 7.3) containing 1% BSA, 50% glycerol and 0.02% sodium azide.
Concentration:	1 mg/ml
Purification:	Purified from mouse ascites fluids or tissue culture supernatant by affinity chromatography (protein A/G)
Conjugation:	Unconjugated
Storage:	Store at -20°C as received.
Stability:	Stable for 12 months from date of receipt.
Predicted Protein Size:	31.1 kDa
Gene Name:	Lck interacting transmembrane adaptor 1
Database Link:	<a href="#">NP_060276</a> <a href="#">Entrez Gene 54923 Human</a> <a href="#">Q9H400</a>
Background:	LIME1 is a raft-associated transmembrane adaptor phosphoprotein that is preferentially expressed in hemopoietic cells, particularly T cells (Brdickova et al., 2003 [PubMed 14610046]; Hur et al., 2003 [PubMed 14610044]). [supplied by OMIM, Mar 2008]
Synonyms:	dj583P15.4; LIME
Protein Families:	Transmembrane



[View online »](#)

**Product images:**


HEK293T cells were transfected with the pCMV6-ENTRY control (Left lane) or pCMV6-ENTRY LIME1 ([RC201909], Right lane) cDNA for 48 hrs and lysed. Equivalent amounts of cell lysates (5 ug per lane) were separated by SDS-PAGE and immunoblotted with anti-LIME1. Positive lysates [LY413516] (100ug) and [LC413516] (20ug) can be purchased separately from OriGene.