

Product datasheet for **TA807655AM**

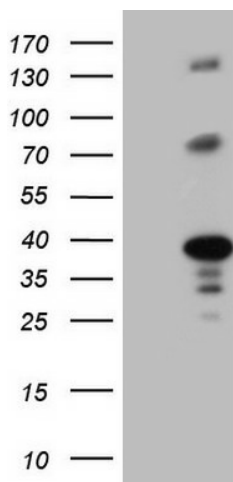
LIME (LIME1) Mouse Monoclonal Antibody (Biotin conjugated) [Clone ID: OTI9E9]

Product data:

| | |
|-------------------------|--|
| Product Type: | Primary Antibodies |
| Clone Name: | OTI9E9 |
| Applications: | WB |
| Recommended Dilution: | WB 1:2000 |
| Reactivity: | Human |
| Host: | Mouse |
| Isotype: | IgG1 |
| Clonality: | Monoclonal |
| Immunogen: | Human recombinant protein fragment corresponding to amino acids 30-295 of human LIME1(NP_060276) produced in E.coli. |
| Formulation: | PBS (pH 7.3) containing 1% BSA, 50% glycerol and 0.02% sodium azide. |
| Concentration: | 0.5 mg/ml |
| Purification: | Purified from mouse ascites fluids or tissue culture supernatant by affinity chromatography (protein A/G) |
| Conjugation: | Biotin |
| Storage: | Store at -20°C as received. |
| Stability: | Stable for 12 months from date of receipt. |
| Predicted Protein Size: | 31.1 kDa |
| Gene Name: | Lck interacting transmembrane adaptor 1 |
| Database Link: | NP_060276 Entrez Gene 54923 Human Q9H400 |
| Background: | LIME1 is a raft-associated transmembrane adaptor phosphoprotein that is preferentially expressed in hemopoietic cells, particularly T cells (Brdickova et al., 2003 [PubMed 14610046]; Hur et al., 2003 [PubMed 14610044]). [supplied by OMIM, Mar 2008] |
| Synonyms: | dj583P15.4; LIME |
| Protein Families: | Transmembrane |



[View online »](#)

Product images:

HEK293T cells were transfected with the pCMV6-ENTRY control (Left lane) or pCMV6-ENTRY LIME1 ([RC201909], Right lane) cDNA for 48 hrs and lysed. Equivalent amounts of cell lysates (5 ug per lane) were separated by SDS-PAGE and immunoblotted with anti-LIME1. Positive lysates [LY413516] (100ug) and [LC413516] (20ug) can be purchased separately from OriGene.