

Product datasheet for **TA807652BM**

MEF2D Mouse Monoclonal Antibody (HRP conjugated) [Clone ID: OTI10B4]

Product data:

Product Type:	Primary Antibodies
Clone Name:	OTI10B4
Applications:	IHC, WB
Recommended Dilution:	WB 1:2000, IHC 1:150
Reactivity:	Human, Mouse, Rat
Host:	Mouse
Isotype:	IgG1
Clonality:	Monoclonal
Immunogen:	Human recombinant protein fragment corresponding to amino acids 1-282 of human MEF2D(NP_005911) produced in E.coli.
Formulation:	PBS (pH 7.3) containing 1% BSA, 50% glycerol.
Concentration:	0.5 mg/ml
Purification:	Purified from mouse ascites fluids or tissue culture supernatant by affinity chromatography (protein A/G)
Conjugation:	HRP
Storage:	Store at -20°C as received.
Stability:	Stable for 12 months from date of receipt.
Predicted Protein Size:	55.8 kDa
Gene Name:	myocyte enhancer factor 2D
Database Link:	NP_005911 Entrez Gene 17261 Mouse Entrez Gene 81518 Rat Entrez Gene 4209 Human Q14814



[View online »](#)

Background:

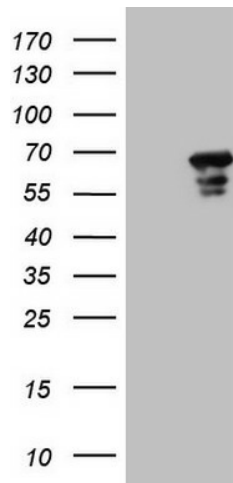
This gene is a member of the myocyte-specific enhancer factor 2 (MEF2) family of transcription factors. Members of this family are involved in control of muscle and neuronal cell differentiation and development, and are regulated by class II histone deacetylases. Fusions of the encoded protein with Deleted in Azoospermia-Associated Protein 1 (DAZAP1) due to a translocation have been found in an acute lymphoblastic leukemia cell line, suggesting a role in leukemogenesis. The encoded protein may also be involved in Parkinson disease and myotonic dystrophy. Alternative splicing results in multiple transcript variants. [provided by RefSeq, Oct 2012]

Synonyms:

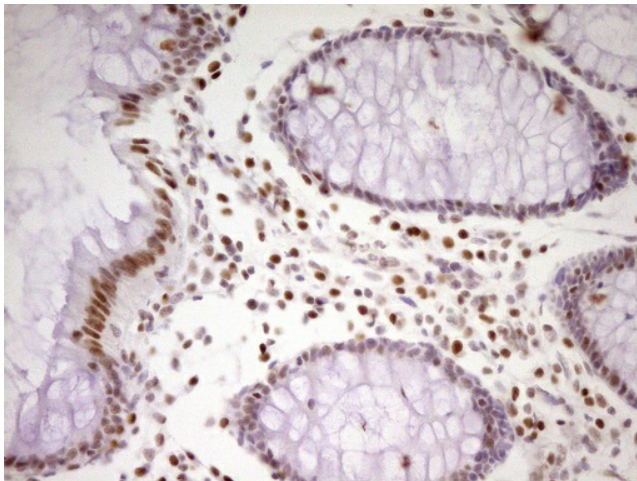
DKFZp686I1536

Protein Families:

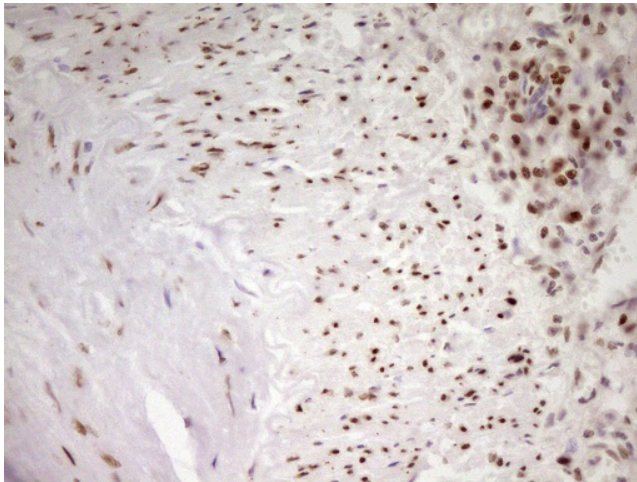
Transcription Factors

Product images:

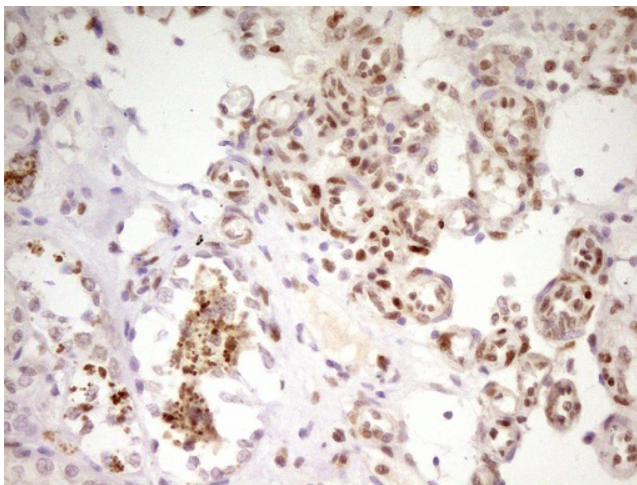
HEK293T cells were transfected with the pCMV6-ENTRY control (Left lane) or pCMV6-ENTRY MEF2D [RC208748], Right lane) cDNA for 48 hrs and lysed. Equivalent amounts of cell lysates (5 ug per lane) were separated by SDS-PAGE and immunoblotted with anti-MEF2D. Positive lysates [LY416984] (100ug) and [LC416984] (20ug) can be purchased separately from OriGene.



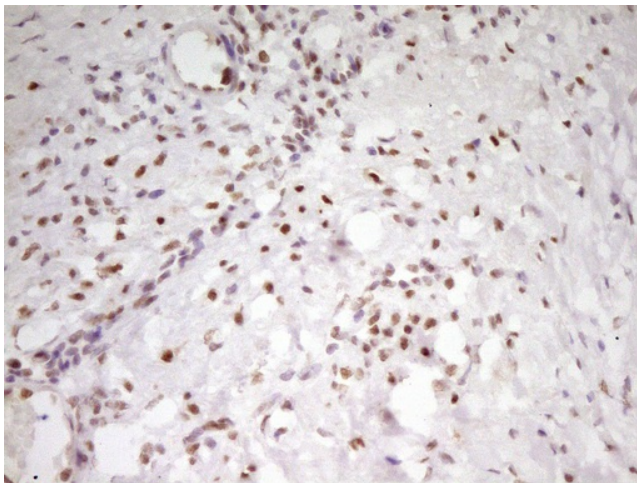
Immunohistochemical staining of paraffin-embedded Human colon tissue within the normal limits using anti-MEF2D mouse monoclonal antibody. (Heat-induced epitope retrieval by 1mM EDTA in 10mM Tris, pH8.5, 120°C for 3min, [TA807652])



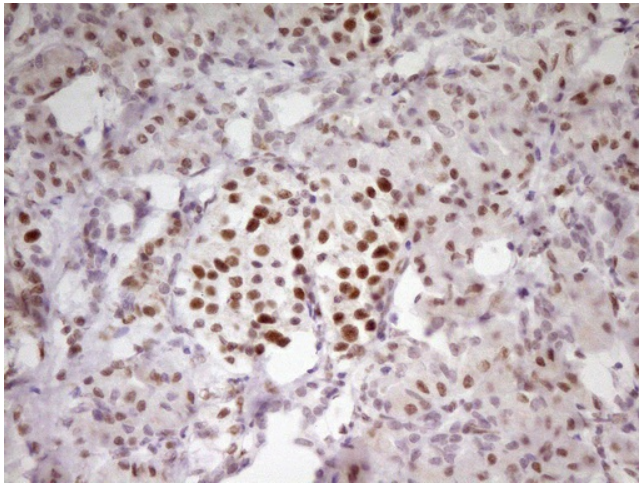
Immunohistochemical staining of paraffin-embedded Adenocarcinoma of Human colon tissue using anti-MEF2D mouse monoclonal antibody. (Heat-induced epitope retrieval by 1mM EDTA in 10mM Tris, pH8.5, 120°C for 3min, [TA807652])



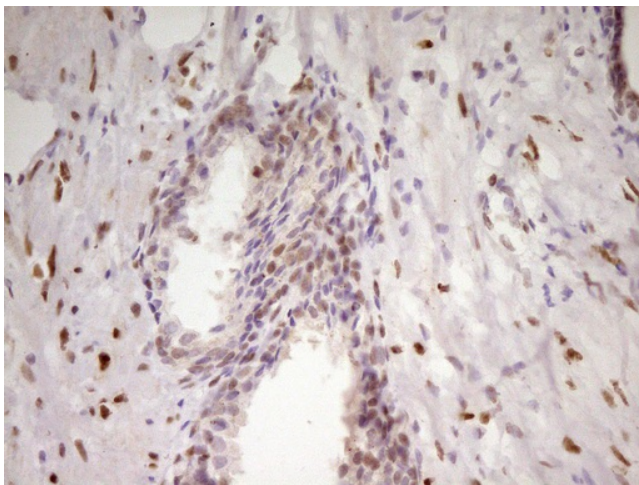
Immunohistochemical staining of paraffin-embedded Human Kidney tissue within the normal limits using anti-MEF2D mouse monoclonal antibody. (Heat-induced epitope retrieval by 1mM EDTA in 10mM Tris, pH8.5, 120°C for 3min, [TA807652])



Immunohistochemical staining of paraffin-embedded Human Ovary tissue within the normal limits using anti-MEF2D mouse monoclonal antibody. (Heat-induced epitope retrieval by 1mM EDTA in 10mM Tris, pH8.5, 120°C for 3min, [TA807652])



Immunohistochemical staining of paraffin-embedded Human pancreas tissue within the normal limits using anti-MEF2D mouse monoclonal antibody. (Heat-induced epitope retrieval by 1mM EDTA in 10mM Tris, pH8.5, 120°C for 3min, [TA807652])



Immunohistochemical staining of paraffin-embedded Human prostate tissue within the normal limits using anti-MEF2D mouse monoclonal antibody. (Heat-induced epitope retrieval by 1mM EDTA in 10mM Tris, pH8.5, 120°C for 3min, [TA807652])